

8,600 m<sup>2</sup> | For Lease

CBRE

# Av. Transformacion

Cuautitlan



## Property for lease

Discover the perfect warehouse for your logistics or manufacturing operations, strategically located in the heart of Mexico City's North industrial corridor.

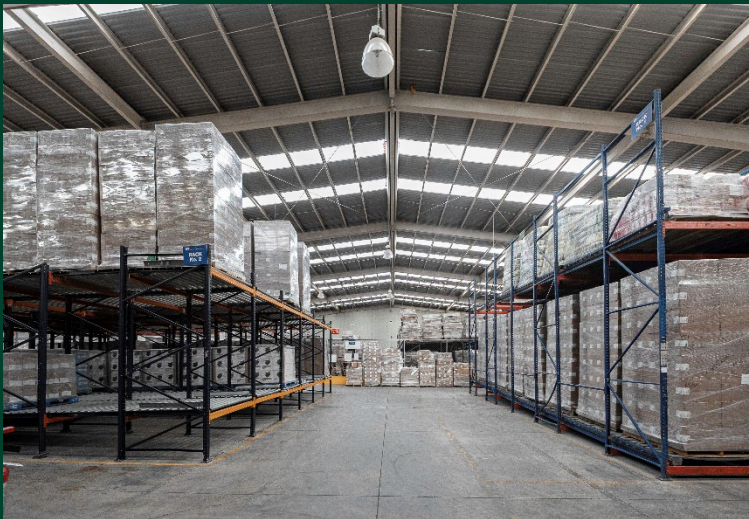
- Unbeatable proximity to Periferico Norte
- Rapid Access to major highway and transportation routes
- Flexible lay out options to suit your needs



Transformación 4, Industrial Cuamatla, 54730 Cuautitlán Izcalli, Méx.

## Specs

- Area** • 8,600 m<sup>2</sup>
- Offices** • 205 m<sup>2</sup>
- Fire protection system** • Hose and cabinets
- Clear height** • 12 m
- Drive in Door** • 2
- Loading Docks** • 4 (possibility of 10)
- Metal curtains** • 10
- Delivery date** • Immediate



## Contact Us

**Camila Delgadillo**  
Associate  
T. +52 656 215 6114  
[camila.delgadillo@cbre.com](mailto:camila.delgadillo@cbre.com)

**Ignacio Bravo**  
Associate  
T. +52 55 4348 4182  
[Ignacio.bravobetancourt@cbre.com](mailto:Ignacio.bravobetancourt@cbre.com)

© 2023 CBRE, Inc. All rights reserved. This information has been obtained from sources believed reliable, but has not been verified for accuracy or completeness. You should conduct a careful, independent investigation of the property and verify all information. Any reliance on this information is solely at your own risk. CBRE and the CBRE logo are service marks of CBRE, Inc. All other marks displayed on this document are the property of their respective owners, and the use of such logos does not imply any affiliation with or endorsement of CBRE. Photos herein are the property of their respective owners. Use of these images without the express written consent of the owner is prohibited.