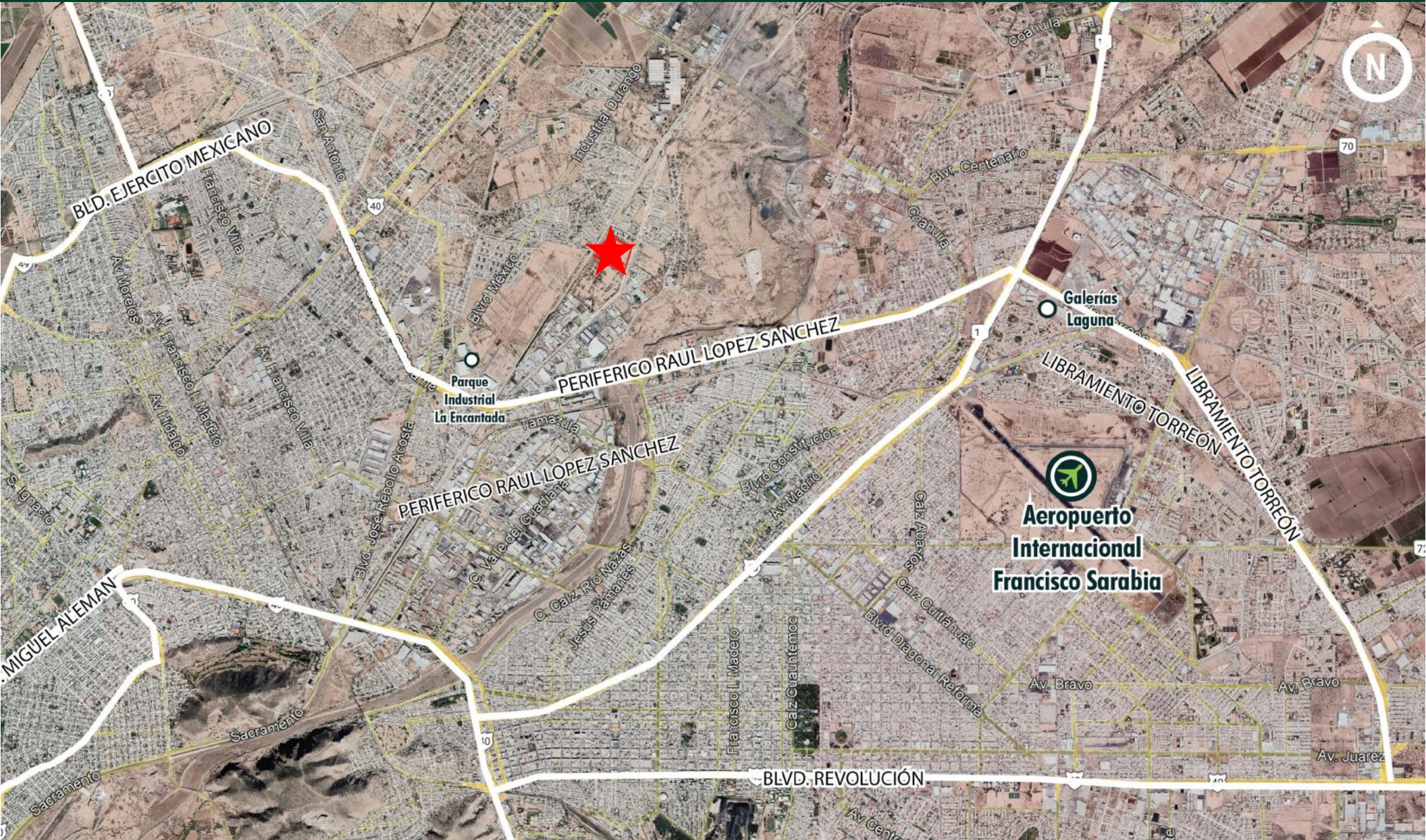


FOR SALE

# GOMEZ PALACIO INDUSTRIAL LAND

101,510 SQM



FOR SALE

# GOMEZ PALACIO INDUSTRIAL LAND

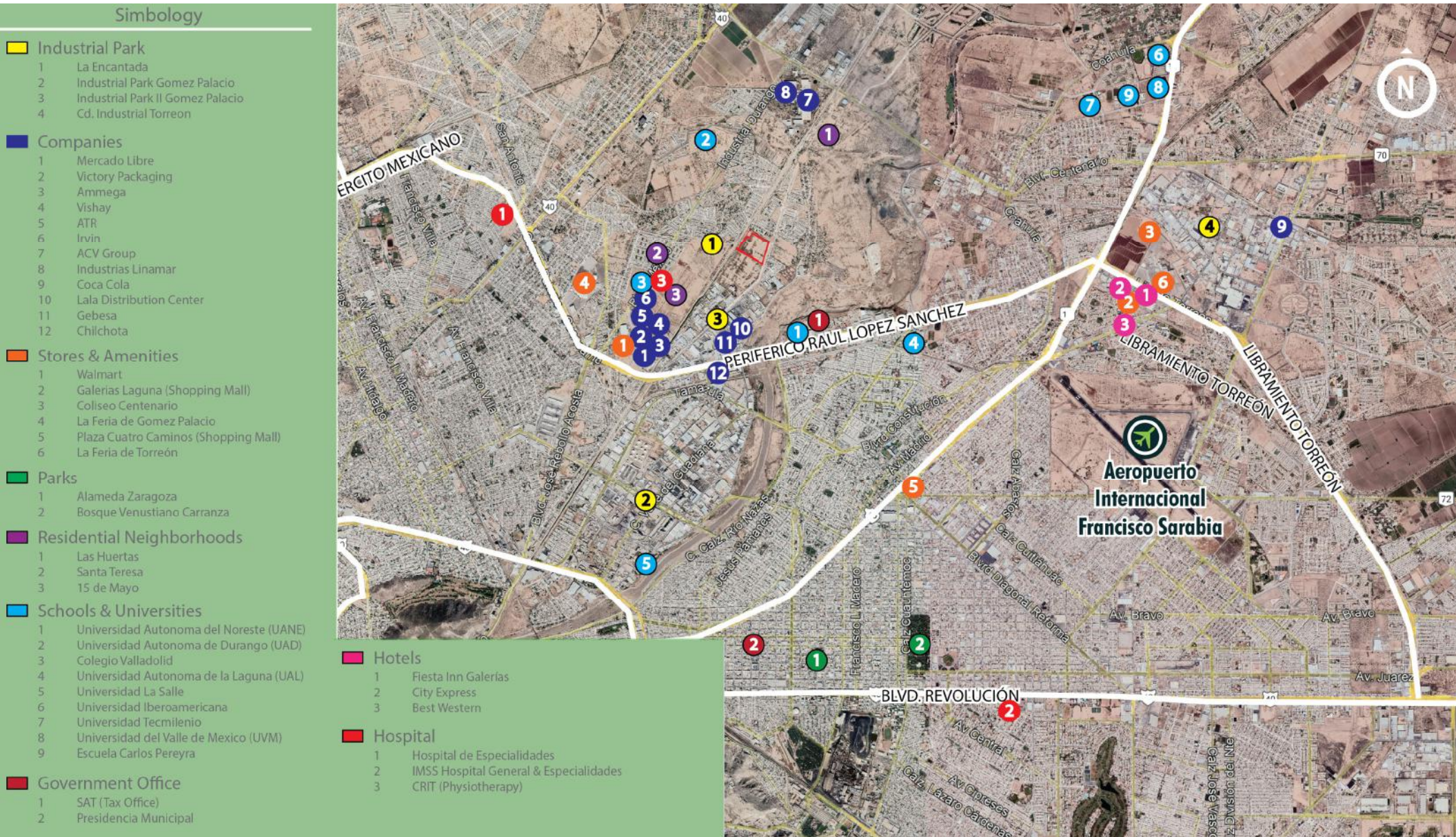
101,510 SQM



# FOR SALE

# GOMEZ PALACIO INDUSTRIAL LAND

## 101,510 SQM



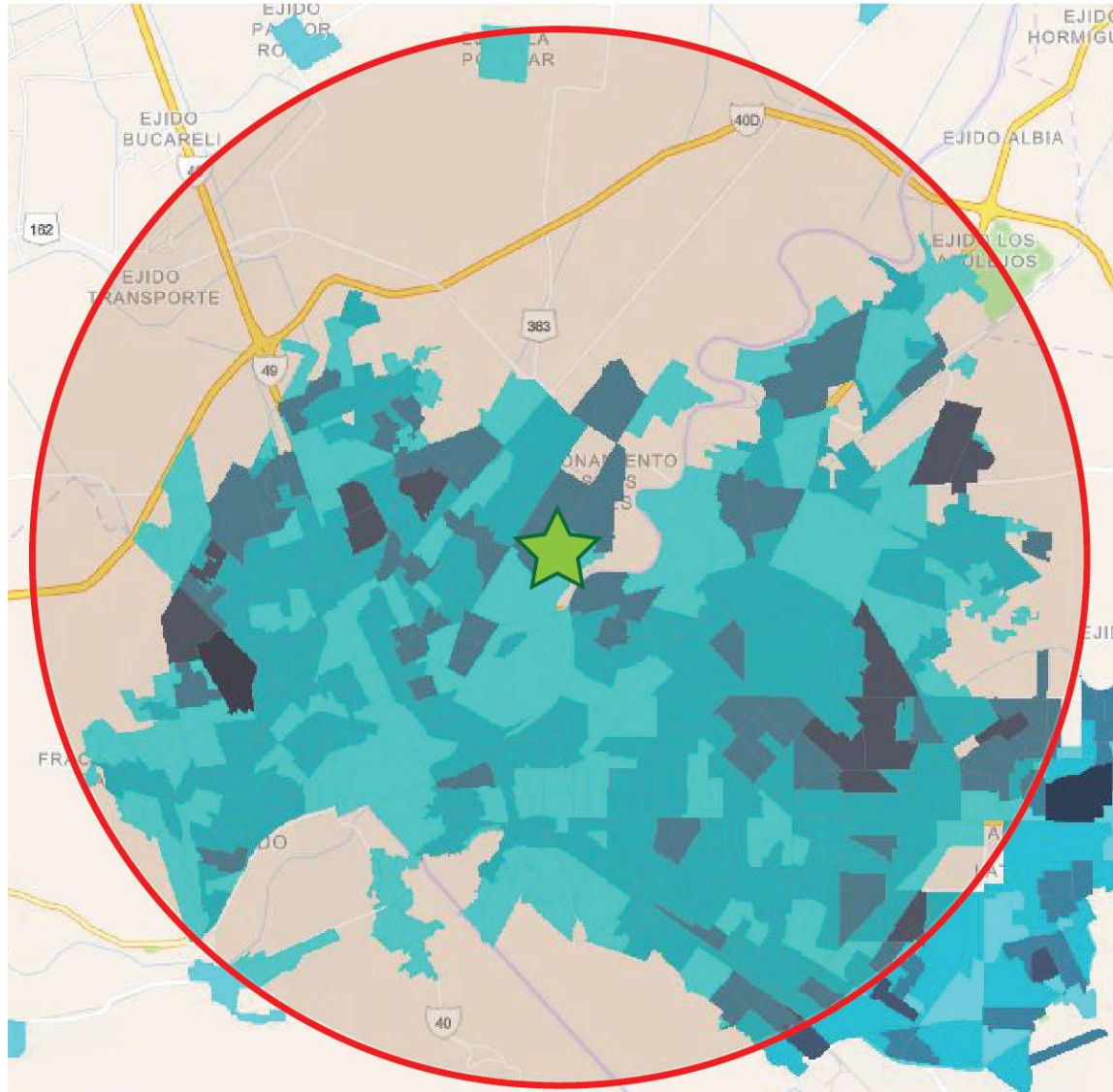
FOR SALE

# GOMEZ PALACIO INDUSTRIAL LAND

## 101,510 SQM

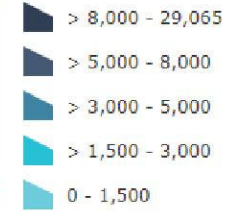


### DEMOGRAPHICS



### Property location

Total population per block



Total population inside the ratio

**909,152 inhab.**

Economically active population

**446,735 inhab.**

Population per age

Age 0 - 14 **219,295 inhab.**

Age 15 - 65 **609,242 inhab.**

Age 65 + **78,700 inhab.**



### CONTACT US

#### Ramón Flores

Executive Vice President

O+(81) 8363 1822

D+ (81) 4160 1253

Ramon.flores@cbre.com

#### Sebastián Albores

Analyst Industrial Broker

O+(81) 8363 1822

D+ (87) 1226 9747

sebastian.albores@cbre.com

© 2022 CBRE, Inc. The information contained in this document has been obtained from sources believed reliable. While CBRE, Inc. does not doubt its accuracy, CBRE, Inc. has not verified it and makes no guarantee, warranty or representation about it. It is your responsibility to independently confirm its accuracy and completeness. Any projections, opinions, assumptions or estimates used are for example only and do not represent the current or future performance of the property. The value of this transaction to you depends on tax and other factors which should be evaluated by your tax, financial and legal advisors. You and your advisors should conduct a careful, independent investigation of the property to determine to your satisfaction the suitability of the property for your needs. Photos herein are the property of their respective owners and use of these images without the express written consent of the owner is prohibited. CBRE and the CBRE logo are service marks of CBRE, Inc. and/or its affiliated or related companies in the United States and other countries. All other marks displayed on this document are the property of their respective owners.