

POLANCO

# Oficinas Disponibles

16,030 M<sup>2</sup> RENTABLES

- 22 niveles de oficina
- Estacionamiento 1 @ 30m<sup>2</sup>
- Forma de entrega:  
obra gris y acondicionado
- Planta tipo: 1574m<sup>2</sup>
- Espacios a partir 300 m<sup>2</sup>

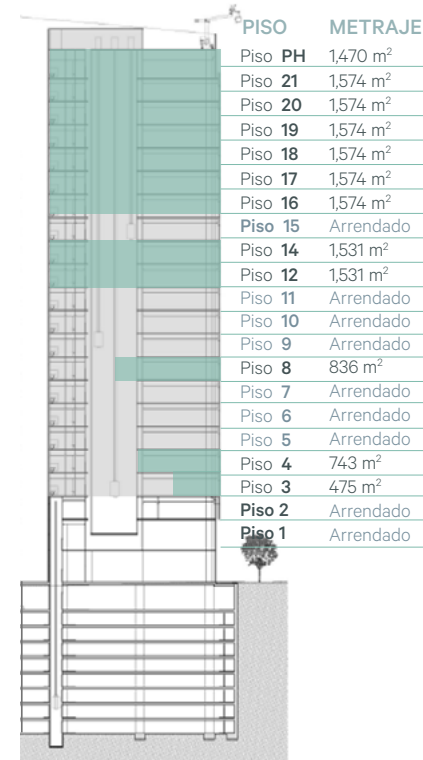


Av Ejército Nacional 453, Col. Granada,  
Miguel Hidalgo, Polanco. CDMX.



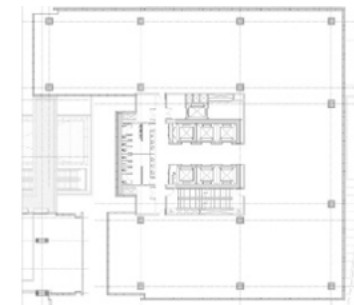


## Pisos Disponibles

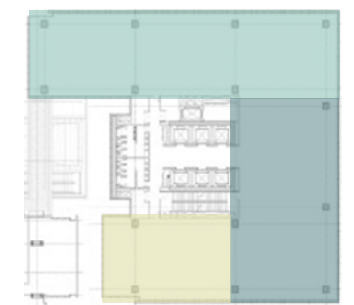


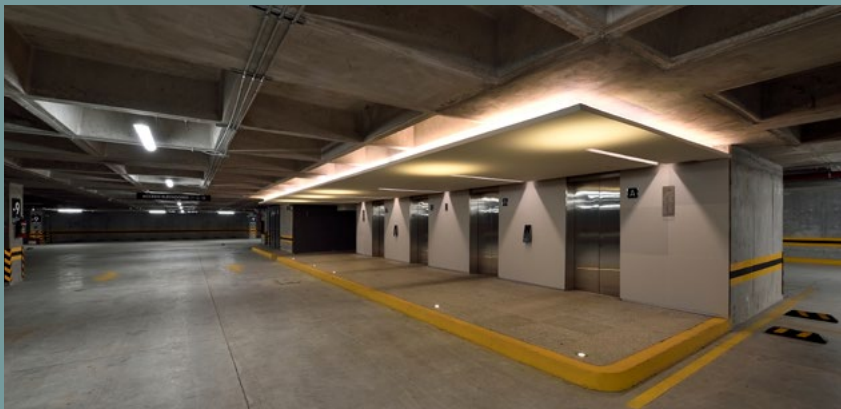
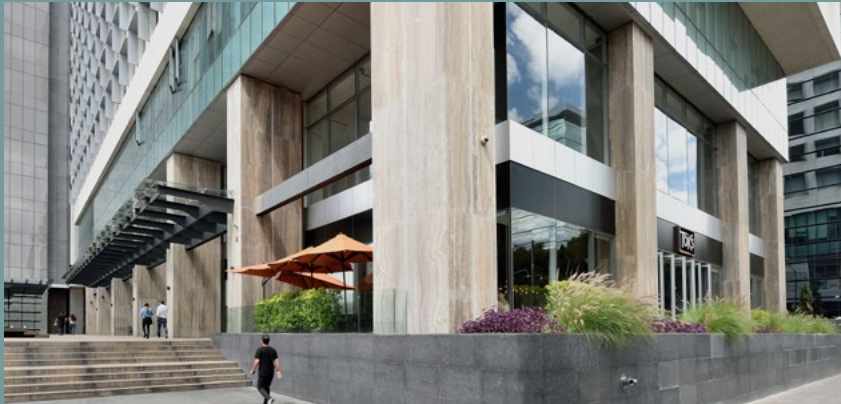
**16,030**  
MCR disponibles

## Planta Tipo



## División de la Planta

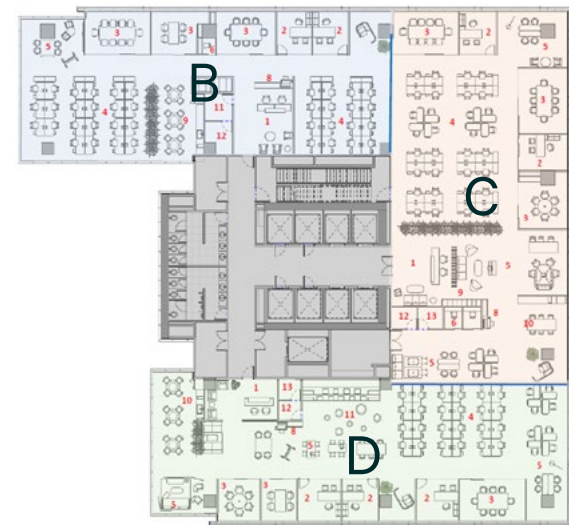




## Posibilidad de la planta



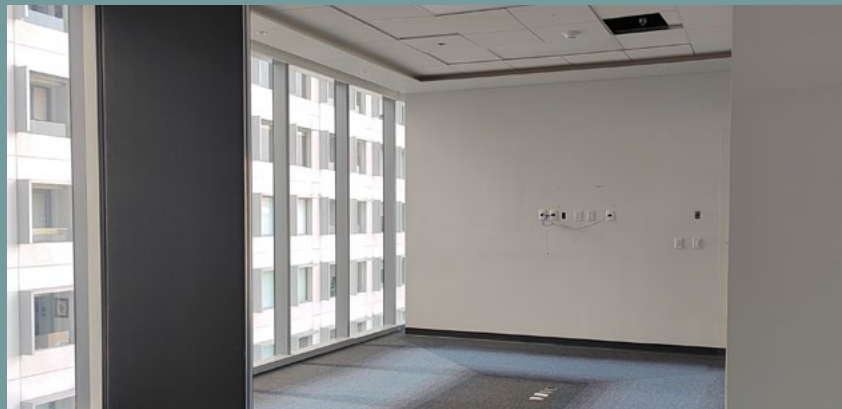
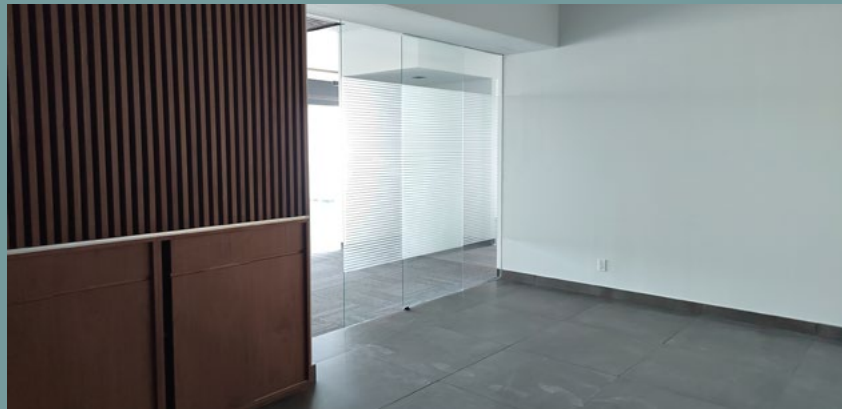
OFICINA A  
-1,574 MCR  
-Headcount  
110 personas



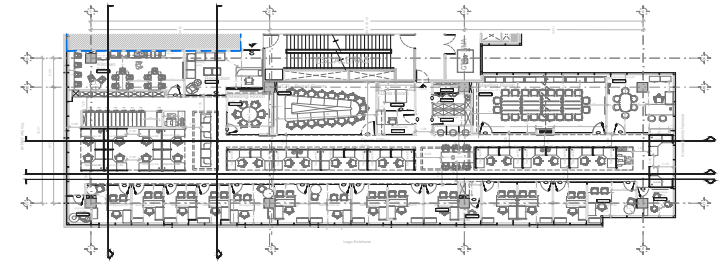
OFICINA B  
-490 MCR  
-Headcount  
46 personas

OFICINA C  
-569 MCR  
-Headcount  
43 personas

OFICINA D  
-515 MCR  
-Headcount  
45 personas



## Piso 4



-MCR 743  
-MCU 663

## Areas

NO	SPACES	SQM	# OF USERS
1	Reception and waiting area	20.58	
2	Auxiliary spaces (impromptue meeting, phone boot)	11.27	25
3	VCR-Board Room	33.78	13
4	Meeting Room (normal) 1	49	10
5	Meeting Room (normal) 2		12
6	Maintenance	4.00	
7	Electrical Room	2	
8	Kitchen	29.09	20
9	Archive (Considering space by volume)	44.7600	
10	Storage	4	
11	Dataroom	7	1
12	Management AAA	24.06	1
13	Management AA	11.20	1
14	Management A	110.50	13
15	Operative BB	87.50	25
TOTAL		438.7200	

## Contacto

Corporate Services  
latitud@cbre.com

Fernanda Muñiz  
(55) 5284 0011

Carlos Ordoñez  
(55) 5284 0012

**CBRE**

© 2022 CBRE, Inc. All rights reserved. This information has been obtained from sources believed reliable, but has not been verified for accuracy or completeness. You should conduct a careful, independent investigation of the property and verify all information. Any reliance on this information is solely at your own risk. CBRE and the CBRE logo are service marks of CBRE, Inc. All other marks displayed on this document are the property of their respective owners, and the use of such logos does not imply any affiliation with or endorsement of CBRE. Photos herein are the property of their respective owners. Use of these images without the express written consent of the owner is prohibited.

## Ubicación

