



6,567 m²

Divisible desde 1,500 m²

PROPIEDAD EN RENTA

MASARYK 133

PDTE. MASARYK 133, POLANCO, MIGUEL HIDALGO, 11560, CDMX

CBRE

CARACTERÍSTICAS



6,567 m² en renta



300 cajones de estacionamiento



Amplio frente de 30 metros
sobre Av. Presidente Masaryk



Dividido en 4 Pisos



Ideal para giros comerciales y oficinas



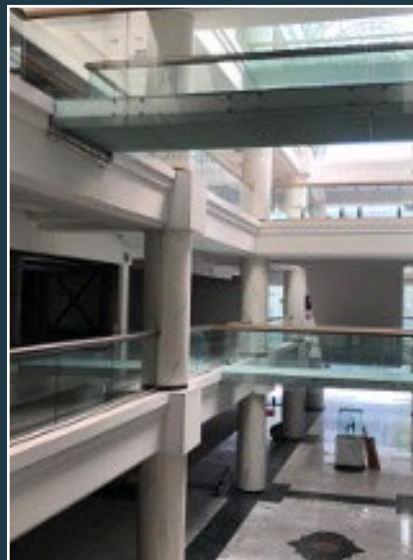
Alto flujo vehicular y peatonal



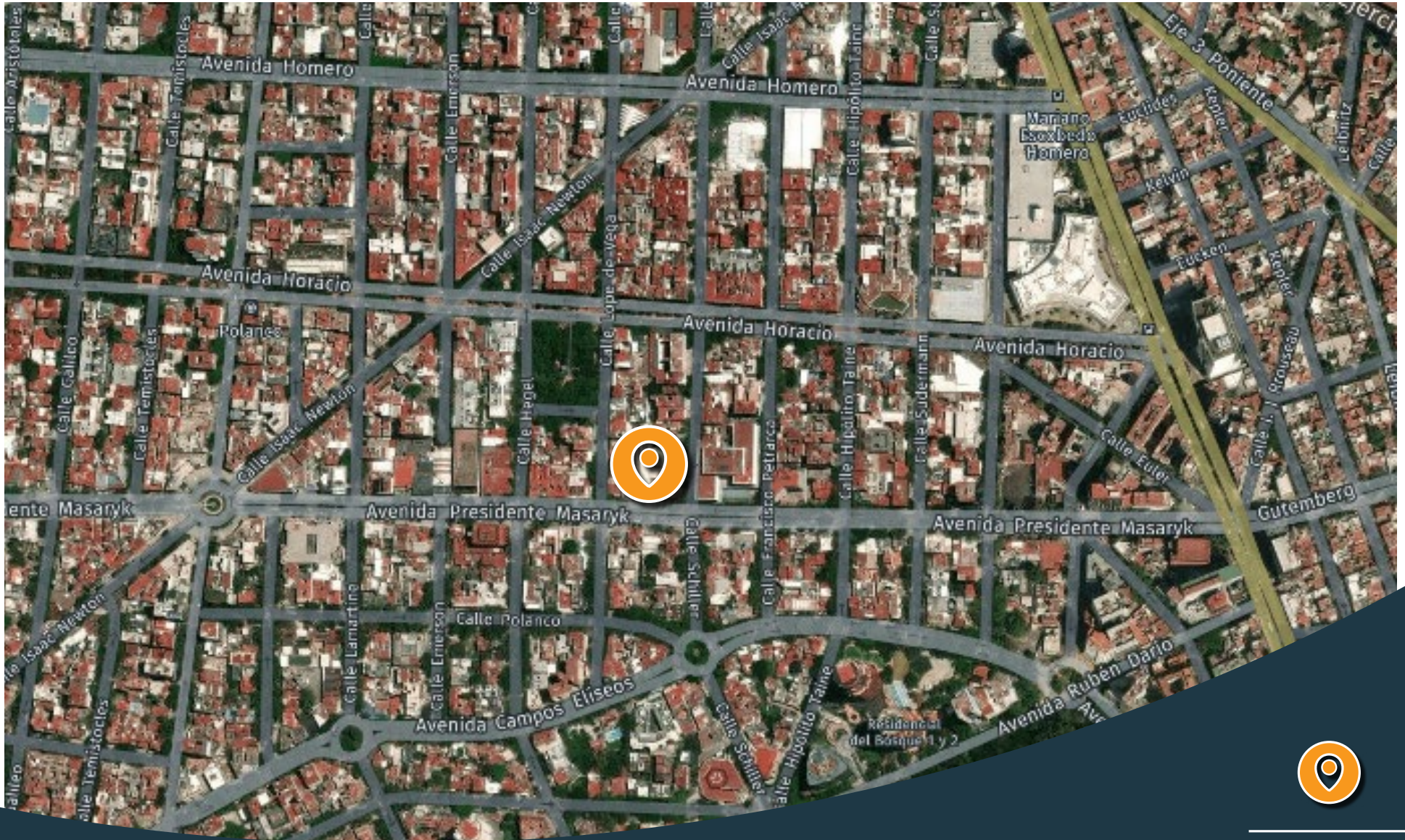
Bahía de ascenso y descenso



Elevador y escaleras eléctricas en cada piso

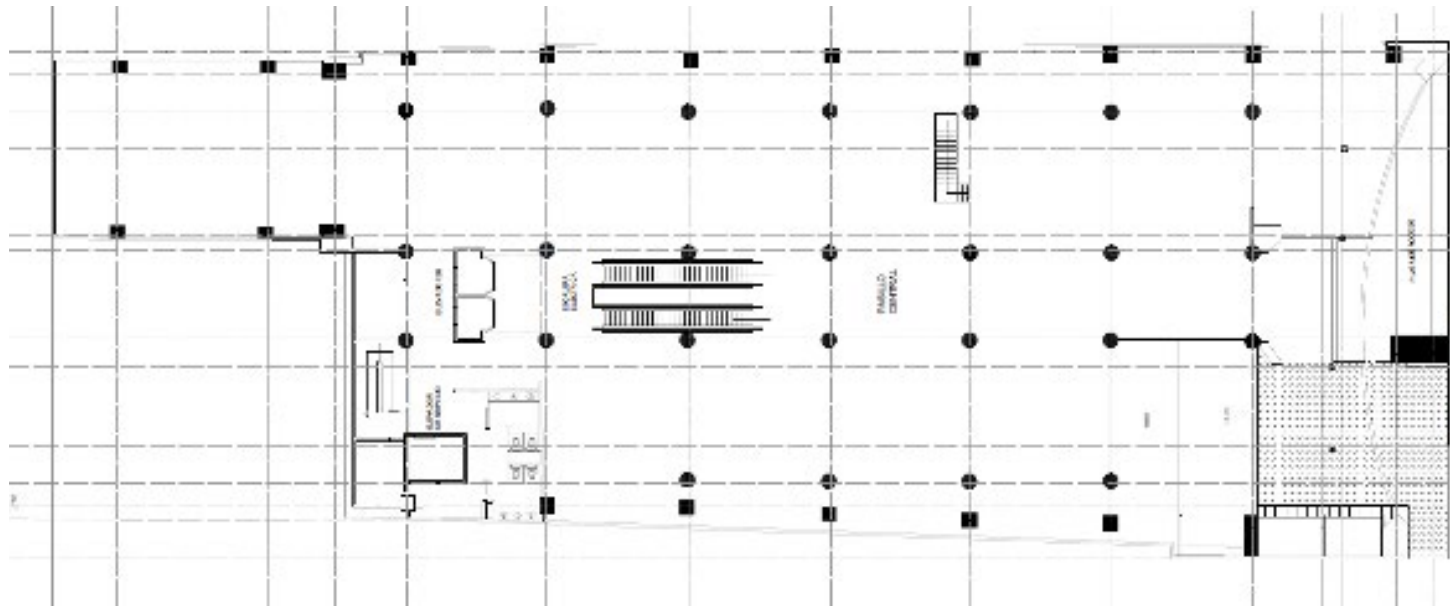


UBICACIÓN

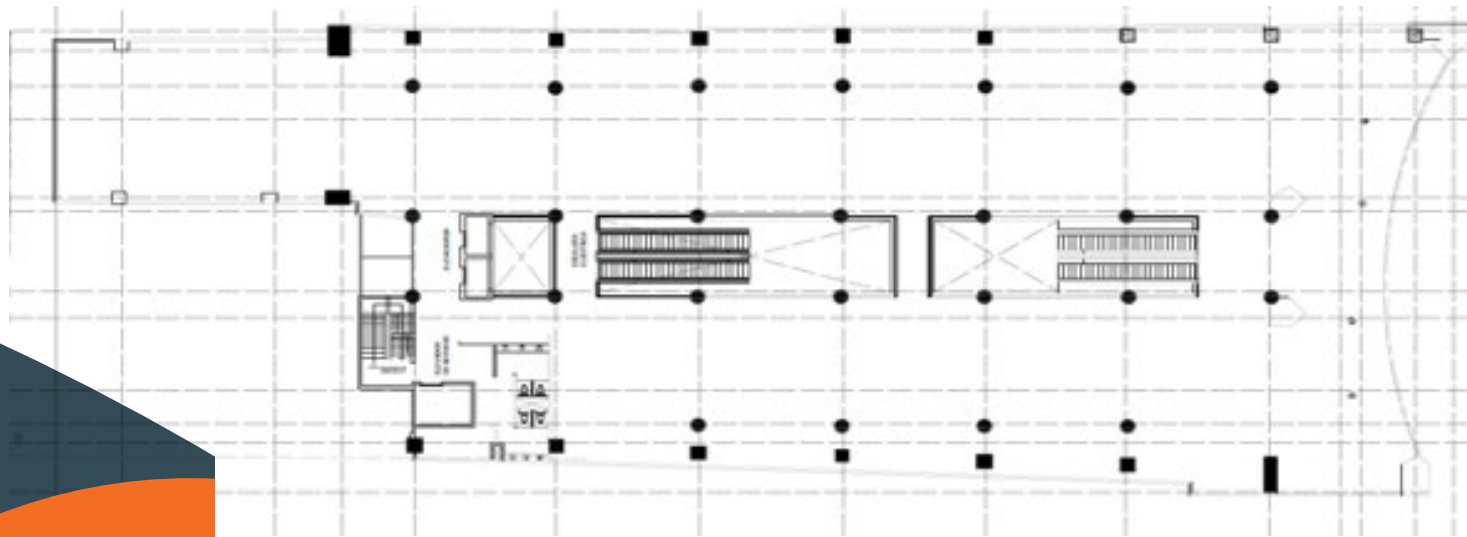


Propiedad
en Renta

PLANOS



PB

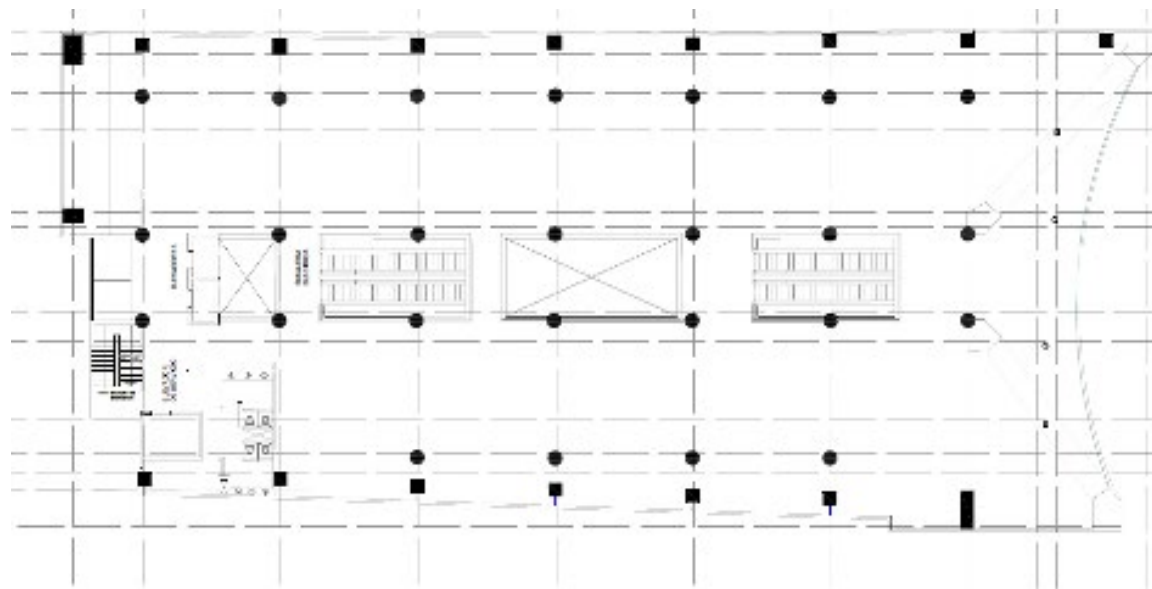


PISO 1

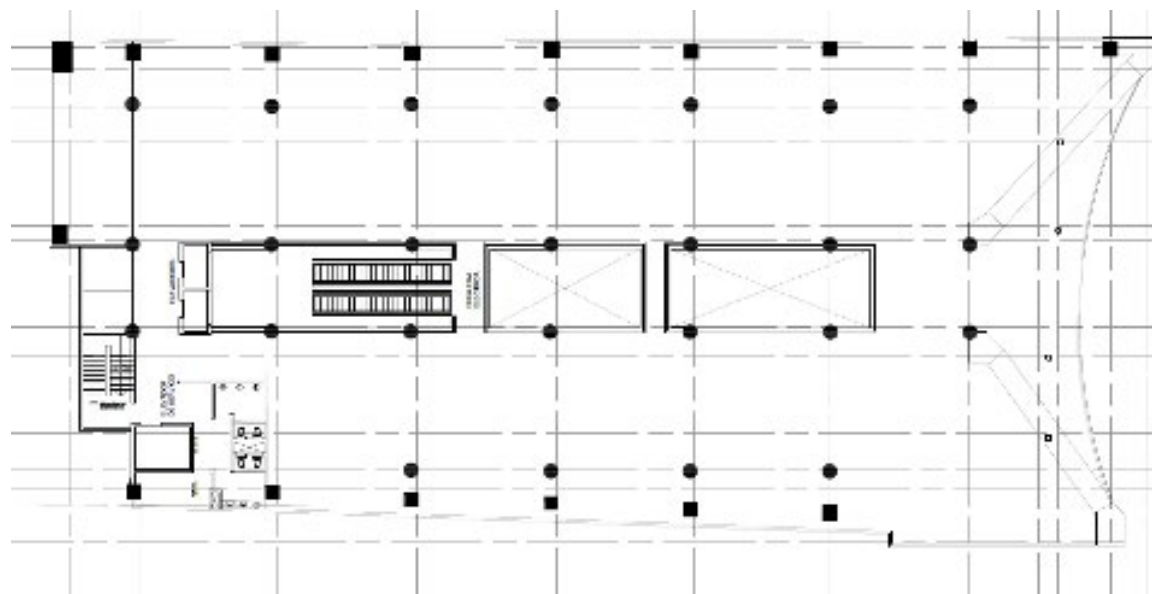
PLANOS

TABLA DE ÁREAS

Piso	M ²
PB	1,915
Piso 1	1,649
Piso 2	1,512
Piso 3	1,492
Total	6,567



PISO 2



PISO 3

INFORMACIÓN DEMOGRÁFICA 1.5 KM



46,615 Población Residente



132,672 Población Flotante

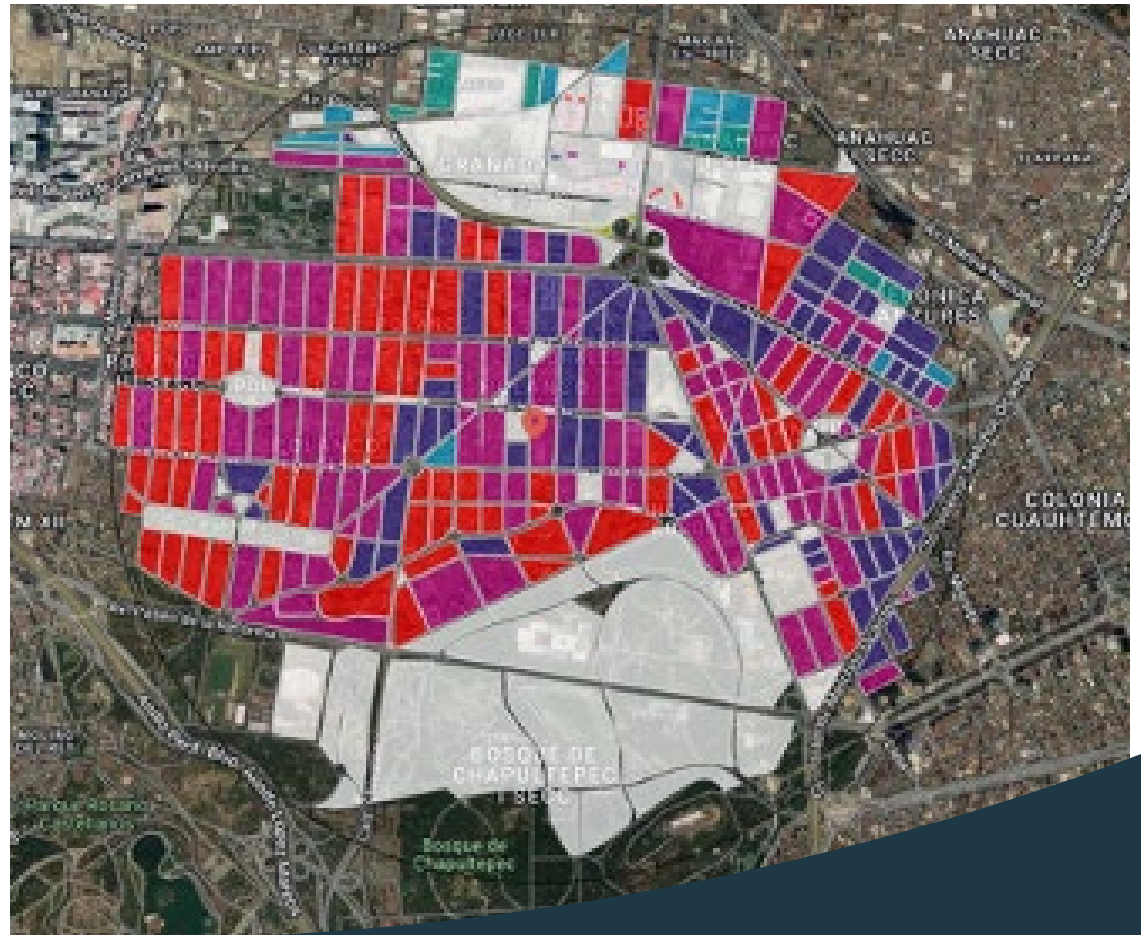


19,700 Hogares



6,328 Unidades Económicas

NIVELES SOCIOECONÓMICOS



NIVELES SOCIOECONÓMICOS



CONTACT US

ALDO MARTÍNEZ

+(55)5284-3291

aldo.martinez@cbre.com

LUIIS LLACA

+(55)5284-3291

luis.llaca@cbre.com

CBRE

© 2022 CBRE, Inc. All rights reserved. This information has been obtained from sources believed reliable, but has not been verified for accuracy or completeness. You should conduct a careful, independent investigation of the property and verify all information. Any reliance on this information is solely at your own risk. CBRE and the CBRE logo are service marks of CBRE, Inc. All other marks displayed on this document are the property of their respective owners, and the use of such logos does not imply any affiliation with or endorsement of CBRE. Photos herein are the property of their respective owners. Use of these images without the express written consent of the owner is prohibited.