

ESPACIOS COMERCIALES EN RENTA

Av Mahatma Gandhi 3808, Meridiam Park, 20342, Aguascalientes.



Contacto:

LUIS LLACA
T. (55) 5284 3291
Luis.Llaca@cbre.com



<https://goo.gl/maps/ruv6b7LPcwngy3YP7>

La Oportunidad:

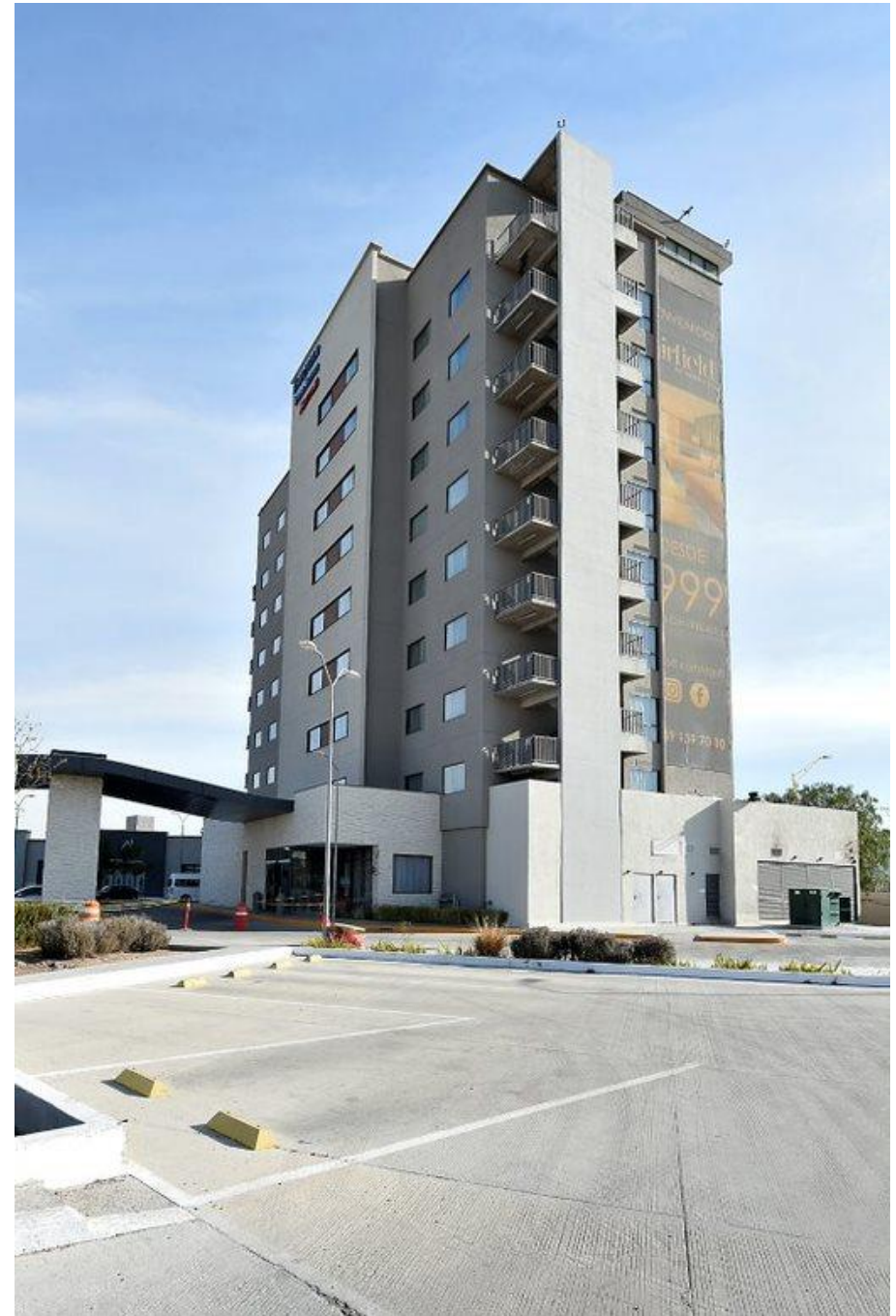
CBRE tiene el gusto poner a su consideración maravillosos espacios comerciales **EN RENTA** en la ciudad de **Aguascalientes**.

Meridiam Park es un proyecto de usos mixtos que actualmente se encuentra anclado con el Hotel Fairfield Inn & Suites, Walmart Express y Cine.

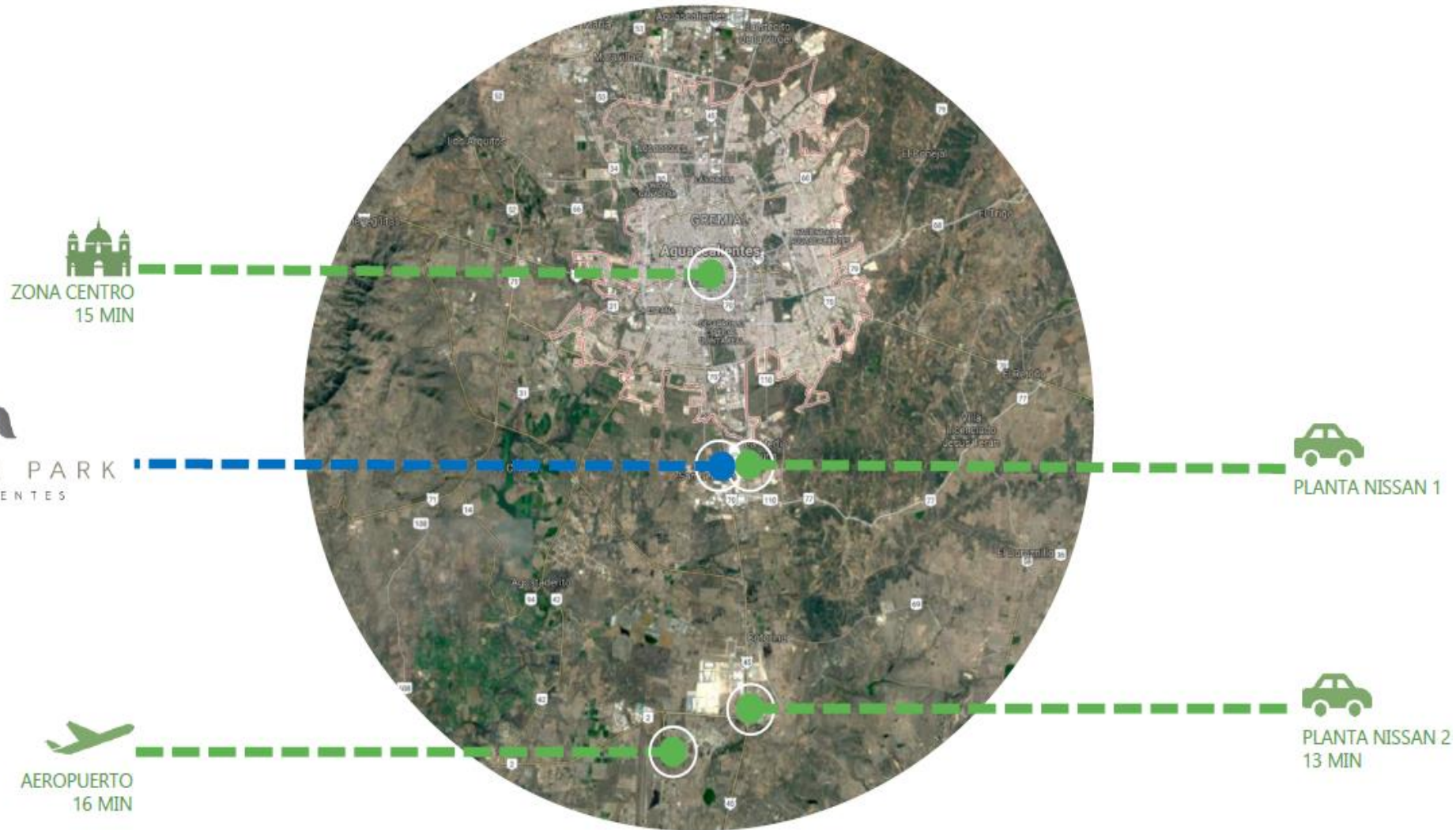
La propiedad se encuentra frente a la planta armadora Nissan que cuenta con más de **80 mil empleados**.

La zona inmediata cuenta con un constante crecimiento habitacional debido al gran detonante de las plantas armadoras, demandando productos y servicios.

Una excelente oportunidad para giros de servicios, alimentos y bebidas y entretenimiento.



Ubicación:



© 2022CBRE, Inc. All rights reserved. This information has been obtained from sources believed reliable, but has not been verified for accuracy or completeness. You should conduct a careful, independent investigation of the property and verify all information. Any reliance on this information is solely at your own risk. CBRE and the CBRE logo are service marks of CBRE, Inc. All other marks displayed on this document are the property of their respective owners, and the use of such logos does not imply any affiliation with or endorsement of CBRE. Photos herein are the property of their respective owners. Use of these images without the express written consent of the owner is prohibited.

Ubicación:



© 2022CBRE, Inc. All rights reserved. This information has been obtained from sources believed reliable, but has not been verified for accuracy or completeness. You should conduct a careful, independent investigation of the property and verify all information. Any reliance on this information is solely at your own risk. CBRE and the CBRE logo are service marks of CBRE, Inc. All other marks displayed on this document are the property of their respective owners, and the use of such logos does not imply any affiliation with or endorsement of CBRE. Photos herein are the property of their respective owners. Use of these images without the express written consent of the owner is prohibited.

Configuración:



© 2022CBRE, Inc. All rights reserved. This information has been obtained from sources believed reliable, but has not been verified for accuracy or completeness. You should conduct a careful, independent investigation of the property and verify all information. Any reliance on this information is solely at your own risk. CBRE and the CBRE logo are service marks of CBRE, Inc. All other marks displayed on this document are the property of their respective owners, and the use of such logos does not imply any affiliation with or endorsement of CBRE. Photos herein are the property of their respective owners. Use of these images without the express written consent of the owner is prohibited.

Anclas:



© 2022CBRE, Inc. All rights reserved. This information has been obtained from sources believed reliable, but has not been verified for accuracy or completeness. You should conduct a careful, independent investigation of the property and verify all information. Any reliance on this information is solely at your own risk. CBRE and the CBRE logo are service marks of CBRE, Inc. All other marks displayed on this document are the property of their respective owners, and the use of such logos does not imply any affiliation with or endorsement of CBRE. Photos herein are the property of their respective owners. Use of these images without the express written consent of the owner is prohibited.

Avance de obra:

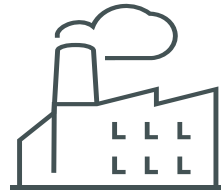


© 2022CBRE, Inc. All rights reserved. This information has been obtained from sources believed reliable, but has not been verified for accuracy or completeness. You should conduct a careful, independent investigation of the property and verify all information. Any reliance on this information is solely at your own risk. CBRE and the CBRE logo are service marks of CBRE, Inc. All other marks displayed on this document are the property of their respective owners, and the use of such logos does not imply any affiliation with or endorsement of CBRE. Photos herein are the property of their respective owners. Use of these images without the express written consent of the owner is prohibited.

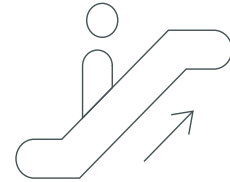
Características:



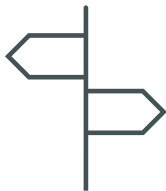
Locales disponibles desde 40 m²



Posibilidad de hacer convenios con el personal de la planta armadora



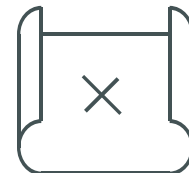
Futuro puente peatonal directo a la armadora



Maravillosa exposición frente a la carretera León-Aguascalientes

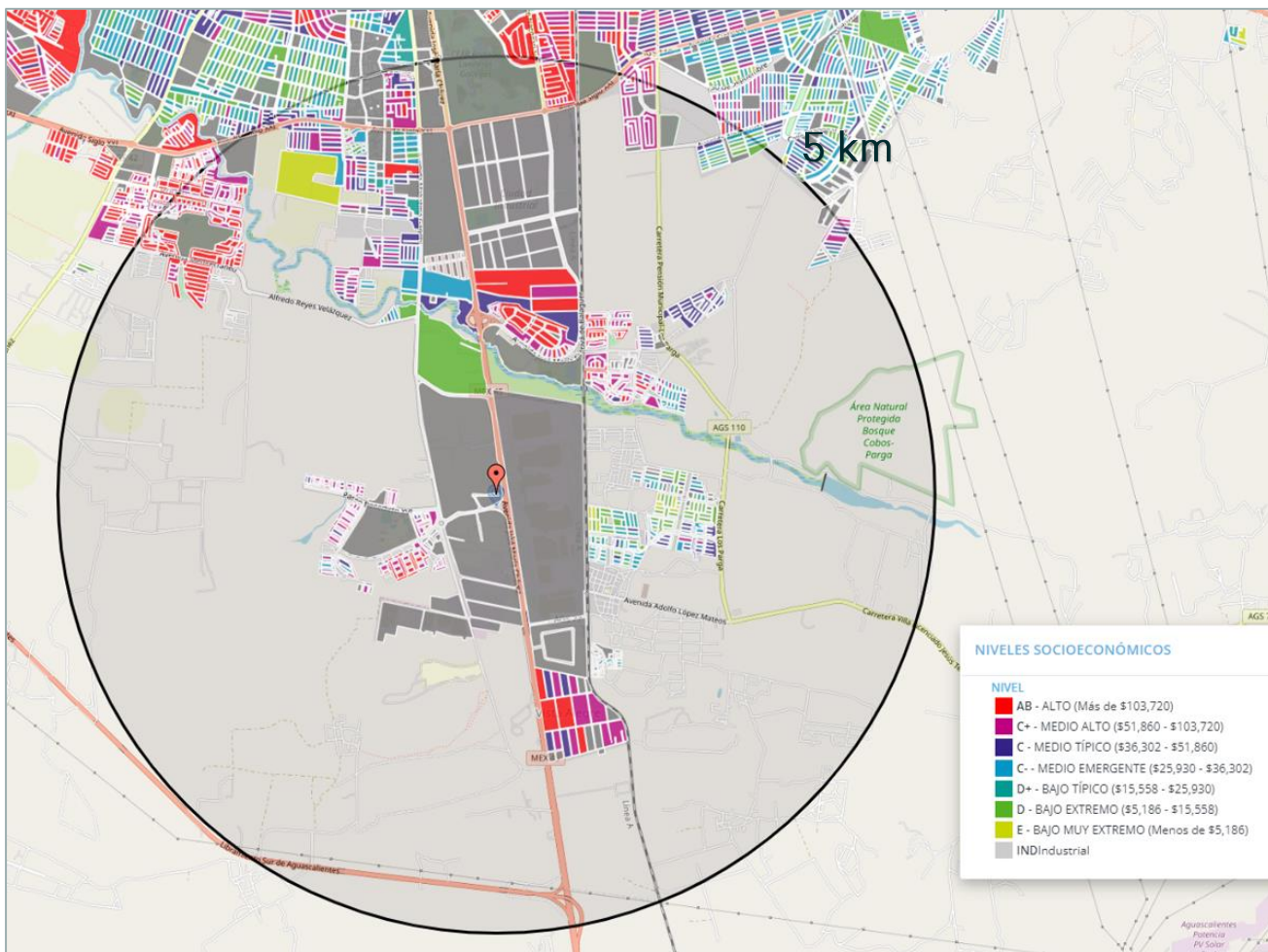


Crecimiento residencial alrededor del punto

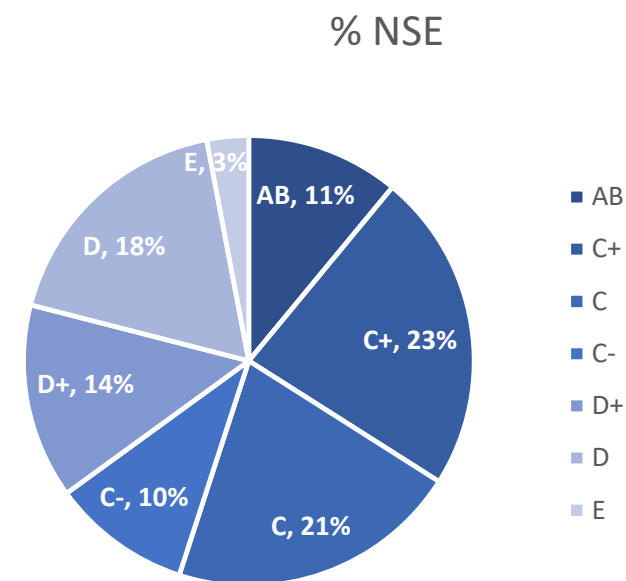


Poca oferta comercial en la zona

Información Demográfica:



Información demográfica 5 km Radio	
Población Total 5 Km	71,606
0-20 Centenials	26,623
21-41 Millenials	23,919
42-56 Generación X	14,732
57-75 Baby Boomers	4,264
Más 75	2,068
Hogares Totales	19,891



© 2022CBRE, Inc. All rights reserved. This information has been obtained from sources believed reliable, but has not been verified for accuracy or completeness. You should conduct a careful, independent investigation of the property and verify all information. Any reliance on this information is solely at your own risk. CBRE and the CBRE logo are service marks of CBRE, Inc. All other marks displayed on this document are the property of their respective owners, and the use of such logos does not imply any affiliation with or endorsement of CBRE. Photos herein are the property of their respective owners. Use of these images without the express written consent of the owner is prohibited.