

FOR SALE

# MOTIVATING GRAPHICS BUILDING

92,569 SF / 8,600 M<sup>2</sup>

Sale Price: \$6,200,000 USD

REYNOSA INDUSTRIAL PARK



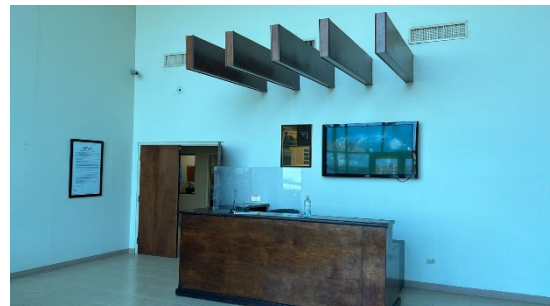
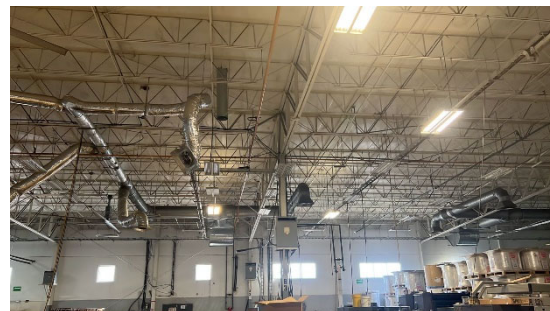
## SPECS

### + AREA

Building size: 92,569 SF / 8,600 m<sup>2</sup>  
Total Land: 188,368 SF / 17,500 m<sup>2</sup>

### + Building

- Construction type: Steel structure with rigid frames
- Dock Doors: 6
- Ramps: 1
- Bay size: 78' x 52' ft / 24 x 16 m
- Parking lots: 60
- Floor thickness: 7" / 18 cm
- Air conditioning: Office area and production area (partially covered).
- Electric power: (1) 2,500 KVAs transformer
- Lighting: Fluorescent T-5 & LED
- Fire protection system: Extinguishers



# MOTIVATING GRAPHICS BUILDING

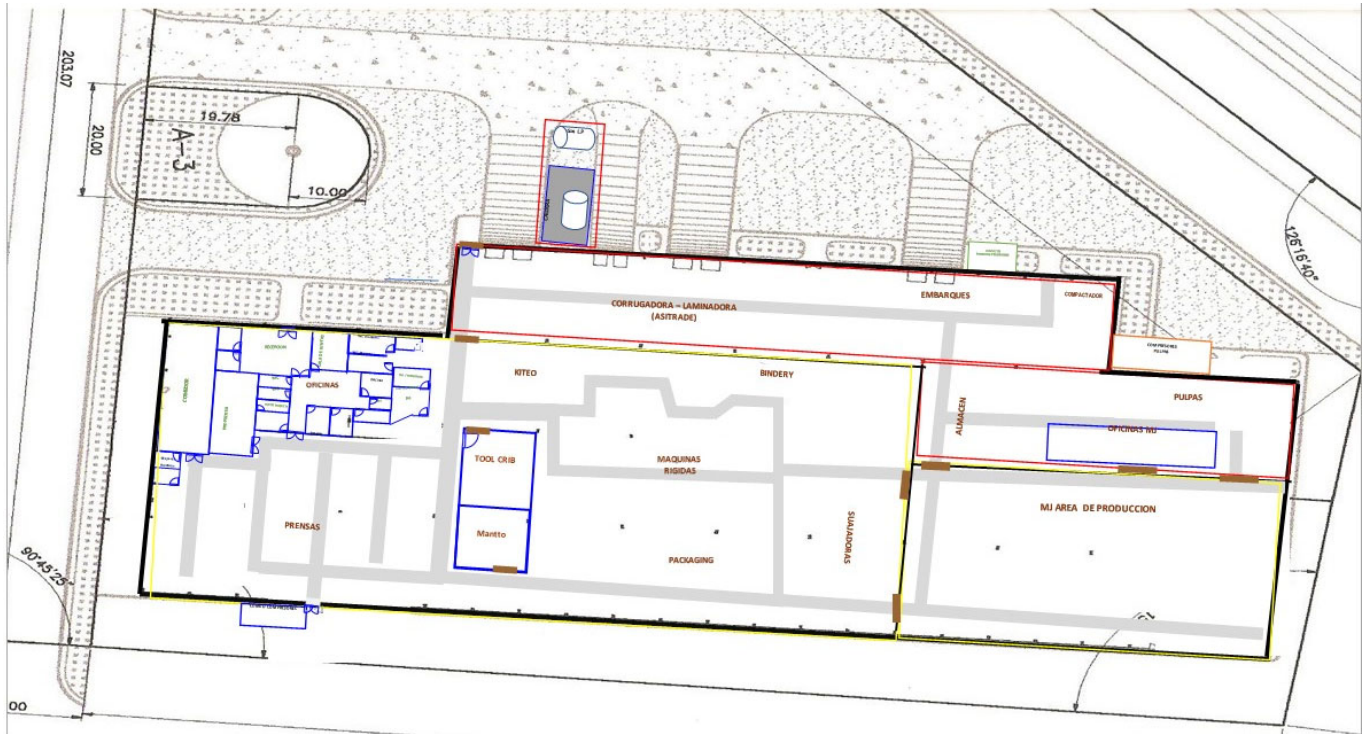
## 92,569 SF / 8,600 M<sup>2</sup>

### Sale Price: \$6,200,000 USD

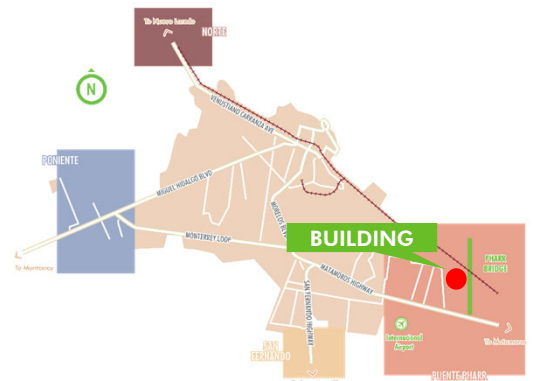
REYNOSA INDUSTRIAL PARK



## LAYOUT



## MAP



## CONTACT US

### Sergio Chávez

Vice President  
 O+(81) 8363 1822  
 D+ (81) 4160 1252  
 Sergio.chavez@cbre.com

### Eugenio Saldaña

Industrial Broker  
 O+(81) 8525 2108  
 D+ (81) 1490 8588  
 eugenio.saldana@cbre.com

© 2023 CBRE, Inc. The information contained in this document has been obtained from sources believed reliable. While CBRE, Inc. does not doubt its accuracy, CBRE, Inc. has not verified it and makes no guarantee, warranty or representation about it. It is your responsibility to independently confirm its accuracy and completeness. Any projections, opinions, assumptions or estimates used are for example only and do not represent the current or future performance of the property. The value of this transaction to you depends on tax and other factors which should be evaluated by your tax, financial and legal advisors. You and your advisors should conduct a careful, independent investigation of the property to determine to your satisfaction the suitability of the property for your needs. Photos herein are the property of their respective owners and use of these images without the express written consent of the owner is prohibited. CBRE and the CBRE logo are service marks of CBRE, Inc. and/or its affiliated or related companies in the United States and other countries. All other marks displayed on this document are the property of their respective owners.