



**OD888**

GUSTAVO MADERO AV. VICTORIA OTE.5840

**2,500m2**  
**Disponibles**

# Ubicación







Industrial  
Rentado



Oficinas  
Disponibles



Industrial  
Disponible

OD888 GUSTAVO MADERO AV. VICTORIA OTE.5840



**2,570 m<sup>2</sup>**  
Disponibilidad

Forma de entrega:  
**Semi Acondicionado**  
(Con posibilidad de acondicionar)

Parque Institucional de usos mixtos  
con gran infraestructura y seguridad



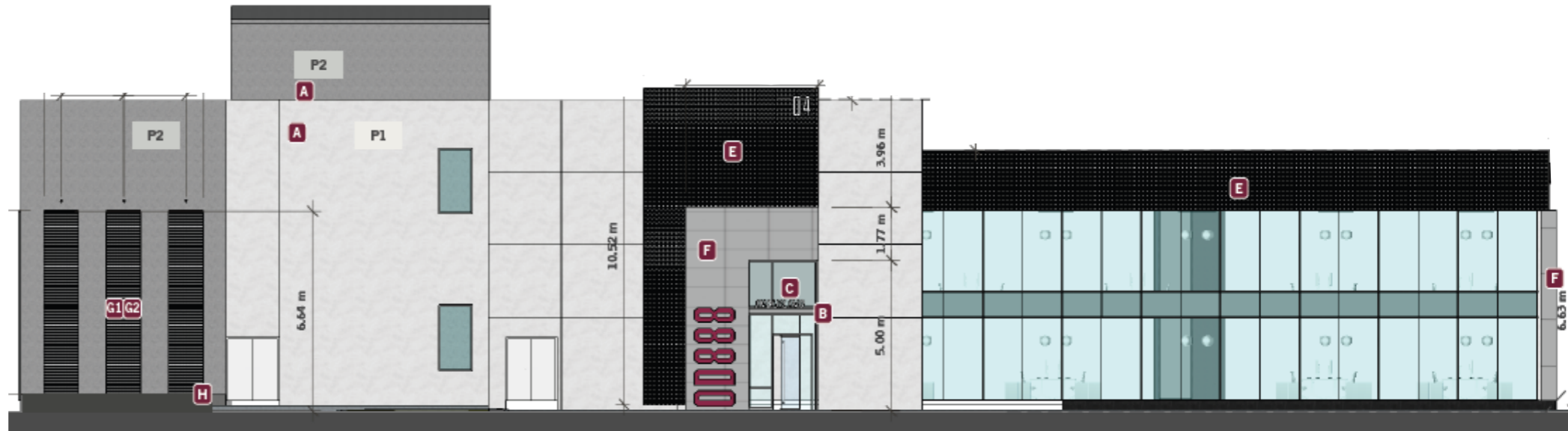
# Disponibile Inmediatamente



- Posibilidad de Acceso Independiente
- Oficinas Abiertas, Listas Para Operar
- Espacio ideal para altas densidades







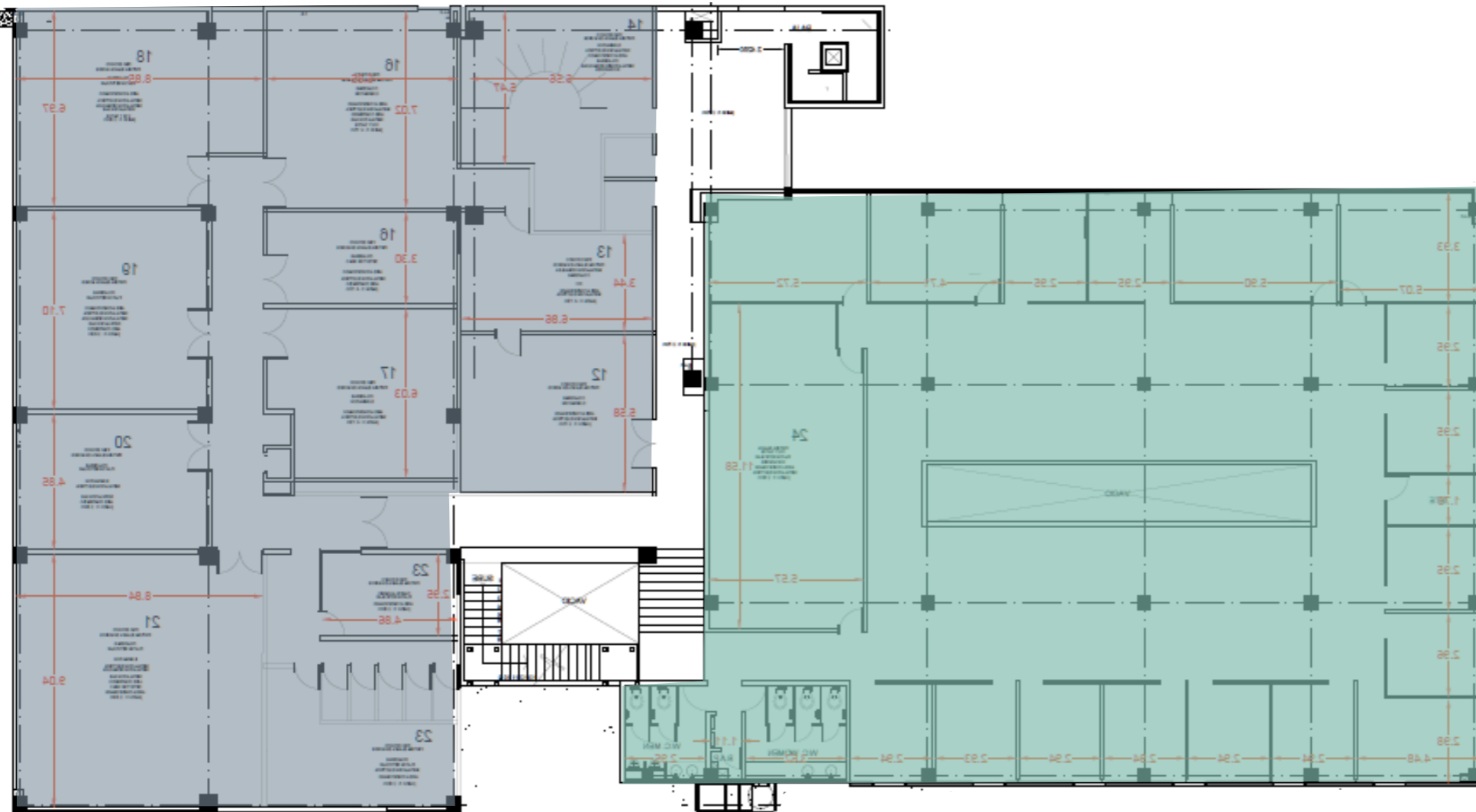
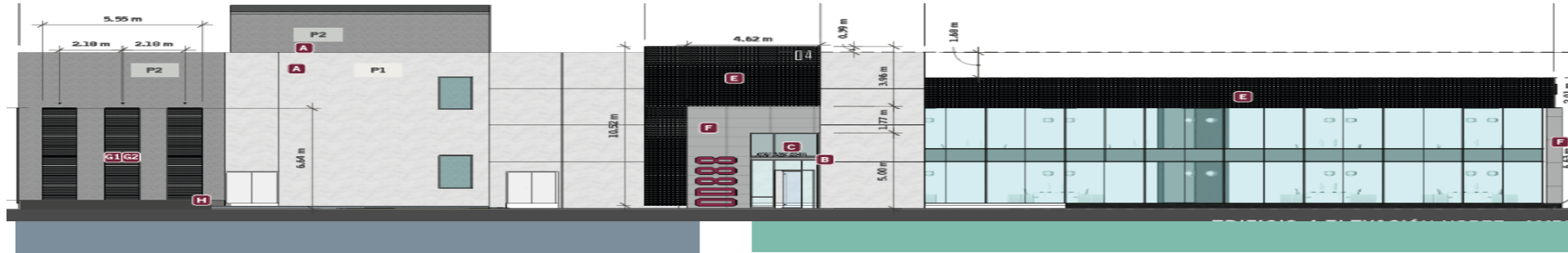
Planta Alta  
**1,261.76 m<sup>2</sup>**  
+  
Planta Baja  
**1,317.08 m<sup>2</sup>**  
=  
Total  
**2,578.84 m<sup>2</sup>**



Edificio  
Disponibile







586.26 m<sup>2</sup>

675.50 m<sup>2</sup>



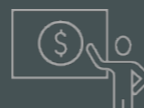
# 1,261.76 m<sup>2</sup>

Planta Alta

\*Posibilidad de tomar toda la planta



Clínica/Hospital



Centro de Capacitación



Dark Kitchen



Call Center



Laboratorio



Oficina



# Ubicación

Av. Victoria Ote. 5840, Tres Estrellas, Gustavo A. Madero, 07820, CDMX



**AMY  
HENDERSON**

T. (55) 8526 8714

[amy.henderson@cbre.com](mailto:amy.henderson@cbre.com)

**ANDRÉS  
MIRANDA**

T. (55) 6818 1343

[andres.miranda@cbre.com](mailto:andres.miranda@cbre.com)

© 2022 CBRE, Inc. All rights reserved. This information has been obtained from sources believed reliable, but has not been verified for accuracy or completeness. You should conduct a careful, independent investigation of the property and verify all information. Any reliance on this information is solely at your own risk. CBRE and the CBRE logo are service marks of CBRE, Inc. All other marks displayed on this document are the property of their respective owners, and the use of such logos does not imply any affiliation with or endorsement of CBRE. Photos herein are the property of their respective owners. Use of these images without the express written consent of the owner is prohibited.