

Industrial | For Lease

Monthly lease rate: \$ 0.39 USD/SF (\$ 4.19 USD/M²)

CBRE

FIBRAMQ SAL 003 BUILDING

134,770 SF / 12,520 M²

Finsa Ramos Arizpe Industrial Park



SPECS

+ AREA

Total available area:	134,770 SF / 12,520 m ²
Office area:	8,552 SF / 794 m ²
Drop lot area:	21,500 SF / 2,000 m ²

+ Building

Construction type:	Concrete Tilt-Up
Docks doors:	3
Ramps:	6
Bay size:	52' x 26' / 15.8 m x 7.9 m
Skylights:	2%
Parking lots: Electrical transformer:	18
Floor thickness:	2,500 kva
Lighting:	8" / 20 cm
Minimum clear height:	LED
Fire protection system:	30 ft / 9.1 m
	Hoses
Reinforced structure crane:	(2) 10 and 20 Ton



Industrial | For Lease

Monthly lease rate: \$ 0.39 USD/SF (\$ 4.19 USD/M²)

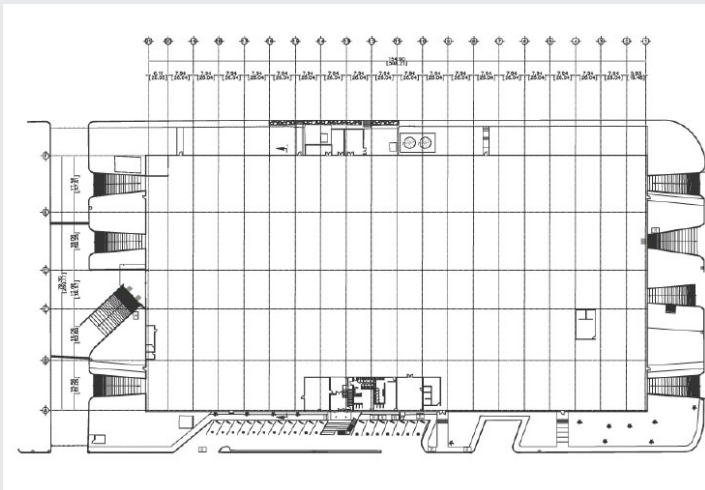
CBRE

FIBRAMQ SAL 003 BUILDING

134,770 SF / 12,520 M²

Finsa Ramos Arizpe Industrial Park

LAYOUT



MAP



Contact Us

Sergio Chávez

Vice President

O+ (81) 8363 1822

D+ (81) 4160 1252

sergio.chavez@cbre.com

Lizeth Menchaca

Associate

O+ (81) 8363 1822

D+ (866) 163 8045

Lizeth.menchaca@cbre.com