

# SALINAS VICTORIA BUILDING

200,560 SF / 18,633 M<sup>2</sup>

Rubén J. Villarreal  
Salinas Victoria, Nuevo León



RENDER

## SPECS

### + AREA

Total land:	411,281 SF / 38,209 m <sup>2</sup>
Total available area:	200,560 SF / 18,633 m <sup>2</sup>

### + Building

Construction type:	Reinforced Concrete Walls
Docks doors:	15
Forklift Ramps:	5
Bay Size:	49' x 78' (15 x 24 mts)
Electrical transformer:	300 kva
Floor thickness:	6" / 15 cm
Lighting :	LED
Minimum clear height:	33 ft / 10 m
Ventilation System:	4 CPH
Fire protection system:	Hose station



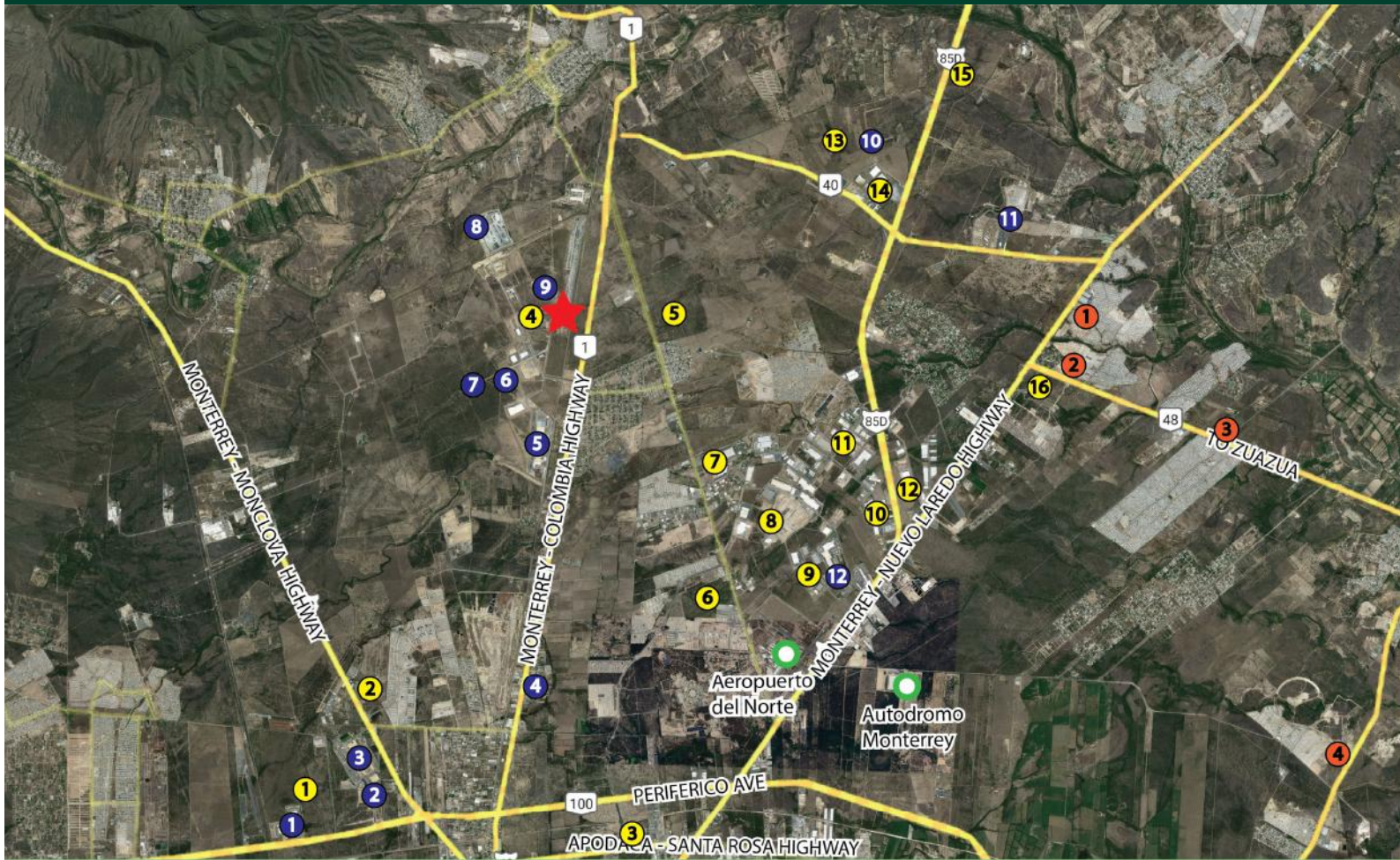
JULY 2023



# SALINAS VICTORIA BUILDING

200,560 SF / 18,633 M<sup>2</sup>

Rubén J. Villarreal  
Salinas Victoria, Nuevo León



Simbology

<span style="color: yellow;">■</span> Industrial Park	<span style="color: blue;">■</span> Companies	<span style="color: red;">■</span> Stores & Amenities
1 VYNMSA Escobedo Park	1 Cedis HEB	1 Bodega Aurrera
2 STIVA El Jaral	2 De Acero	2 Soriana Clénega
3 Pocket Park Escobedo	3 Navistar México	3 Mi tienda del Ahorro
4 Interpuerto Monterrey	4 Ficosa	4 Merco
5 Metro Alianza Savic	5 Mondelez	
6 Terra Park Norte	6 Grupo Jumex	
7 Metro Alianza I-35	7 Kawasaki Motores	
8 Nexxus ADN	8 Tubacero	
9 CPA ADN	9 Kayaku Steel	
10 El Nacional	10 Cedis DHL	
11 EVALTA MTP	11 Transportes Larmex	
12 Diamante Industrial Park	12 Cedis Walmart	
13 Nexxus ADN II		
14 Las Américas		
15 Diamante II		
16 Pocket Park Norte		



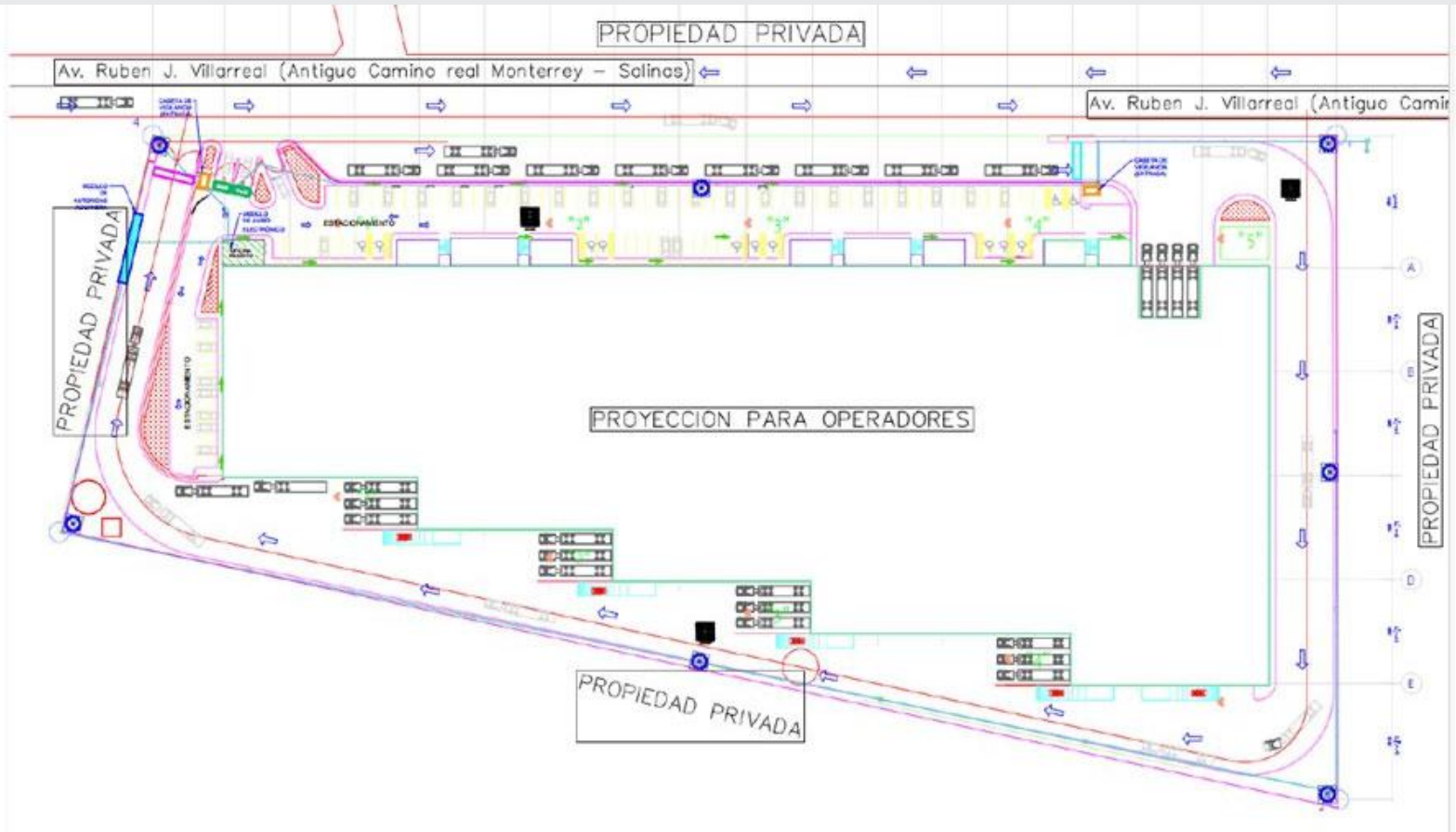


# SALINAS VICTORIA BUILDING

200,560 SF / 18,633 M<sup>2</sup>

Rubén J. Villarreal  
Salinas Victoria, Nuevo León

## LAYOUT



## Contact Us

### Ramón Flores

Executive Vice President  
O+(81) 8363 1822  
D+ (81) 4160 1253  
ramon.flores@cbre.com

### Eugenio Saldaña

Industrial Broker  
O+(81) 8525 2108  
D+ (81) 1490 8588  
eugenio.saldana@cbre.com