

TLALPAN

Ideal para un Call Center

San Diego Churubusco, Coyoacán, C.P. 04120 Ciudad de México, CDMX



UBICACIÓN

••• Líneas Metro

 Cineteca Nacional

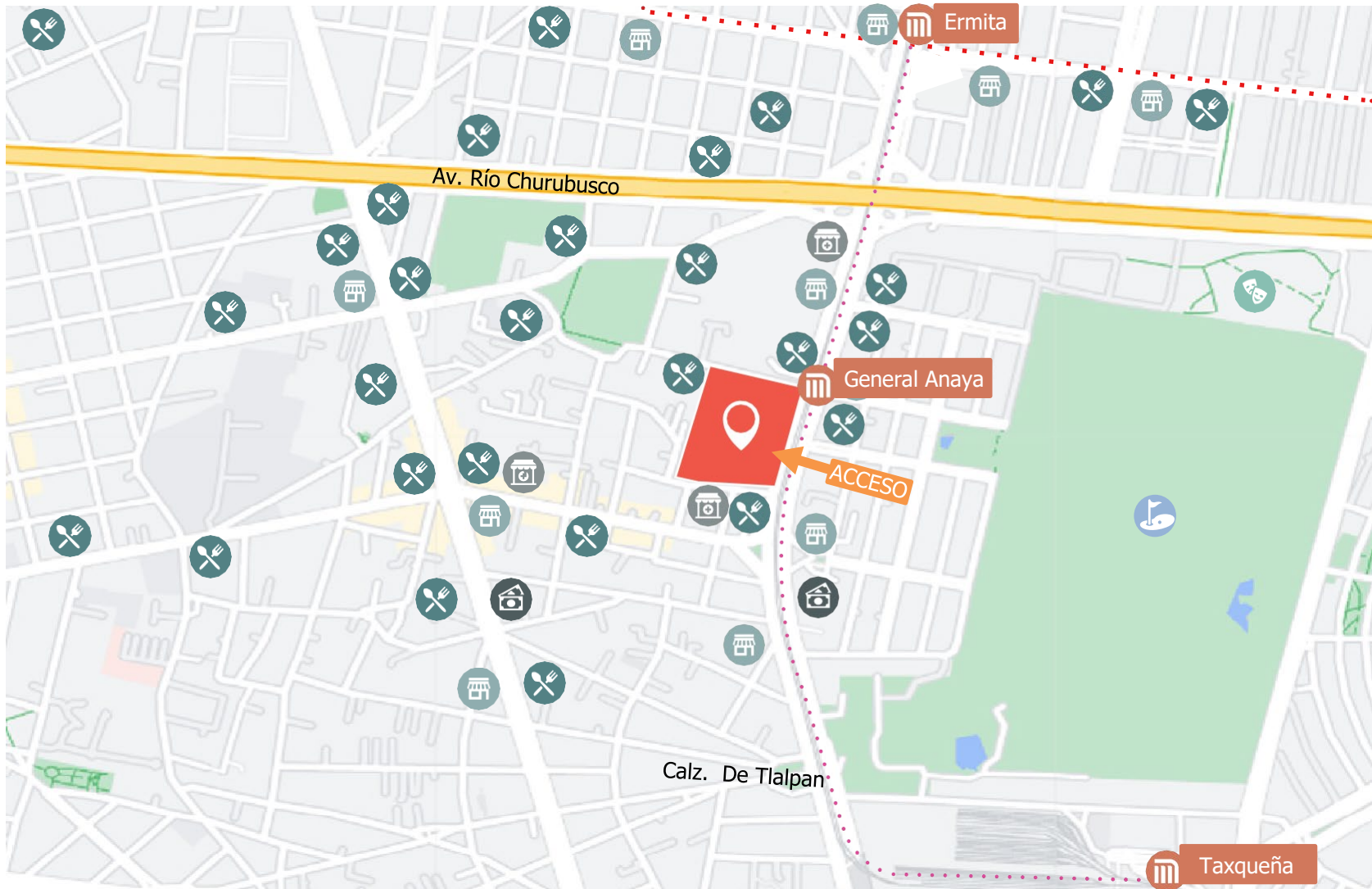
 Cajero Automático

 Tiendas de Autoservicio

 Restaurantes

 Farmacias

 Club Campestre CDMX





Complejo de Usos Mixtos
+25,000 m²

Seguridad



Disponibles Oficinas
3,190m²

Propietario Institucional



Edificio 3
2,490 m²

Servicios Listos



Edificio 5
700 m²

Gran Accesibilidad



Edificio 5
700 m²

Edificio 3
2,490m²

Disponibilidad
Inmediata
3,190 m²



Edificio 3
2,260 m²

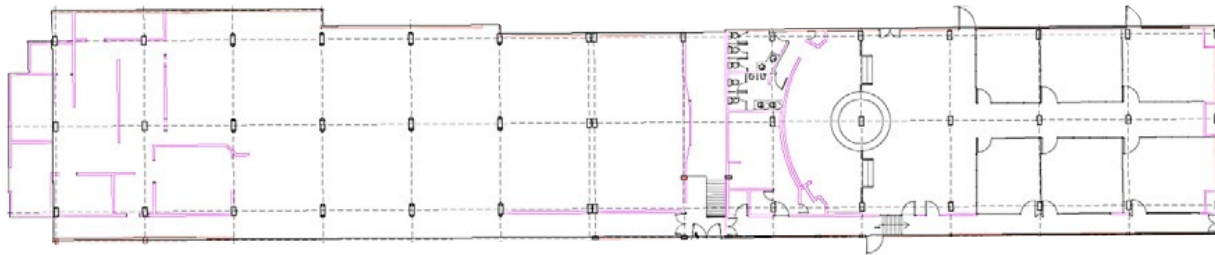


EDIFICIO 3 — 2,490 m²

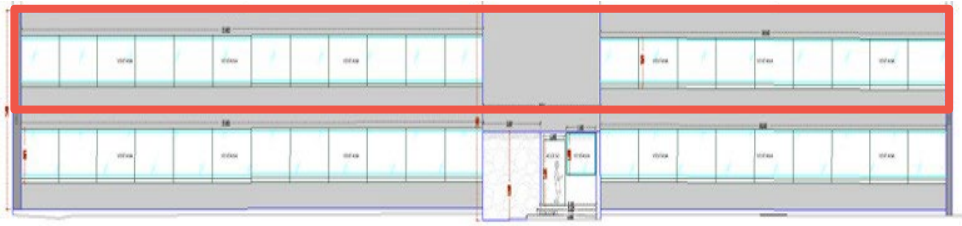


PLANTA ALTA 1,245 m²

PLANTA BAJA 1,245 m²

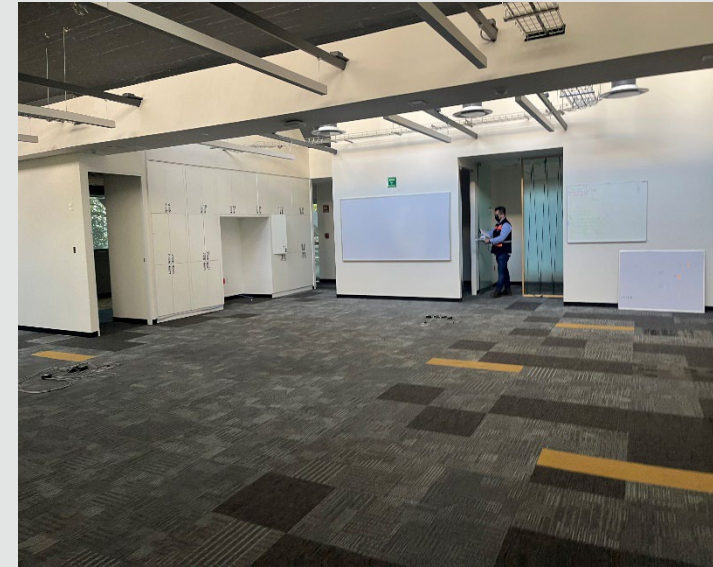
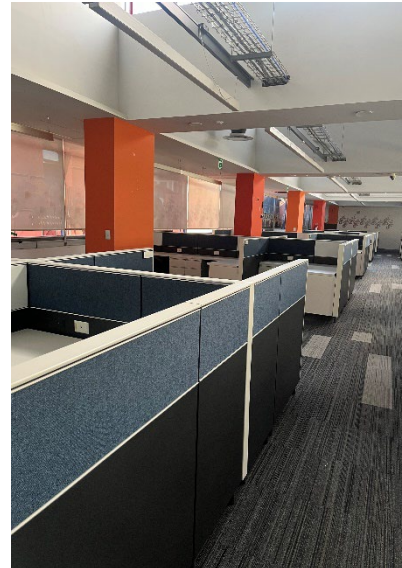
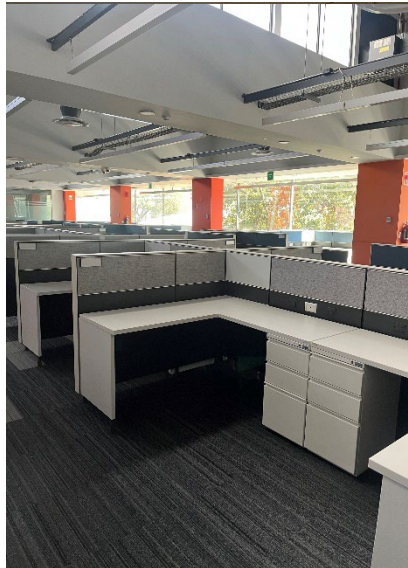
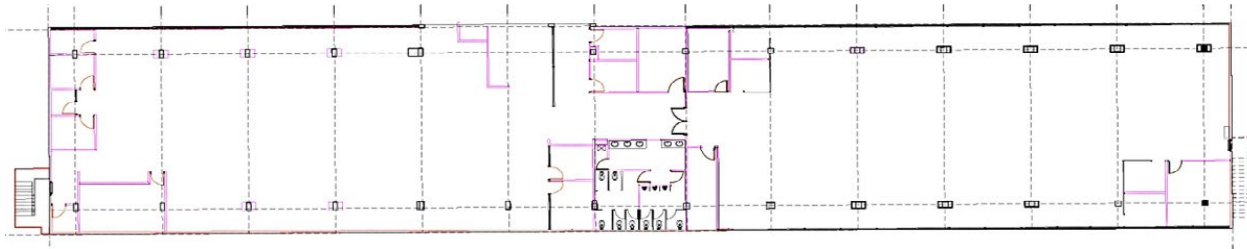


EDIFICIO 3 — 2,490 m²



PLANTA ALTA 1,245 m²

PLANTA BAJA 1,245 m²





Edificio 5
700 m²

EDIFICIO 5 — 672 m²

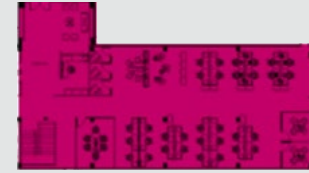


PLANTA ALTA 352 m²

PLANTA BAJA 320 m²



OPCIÓN DE CONFIGURACIÓN



- Recepción
- 3 Phone Booths
- 3 Salas de Juntas
- 1 Privado
- 32 Estaciones de Trabajo

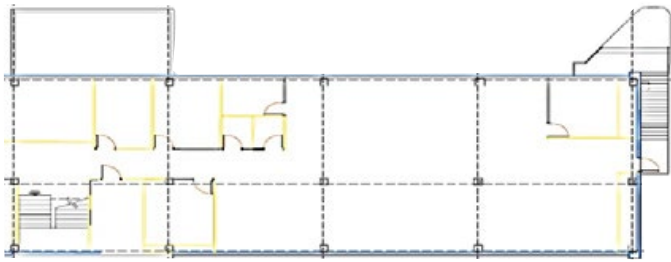


EDIFICIO 5 — 672 m²

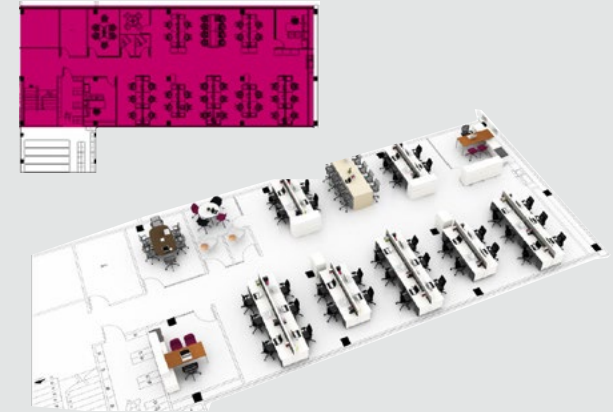


PLANTA ALTA 352 m²

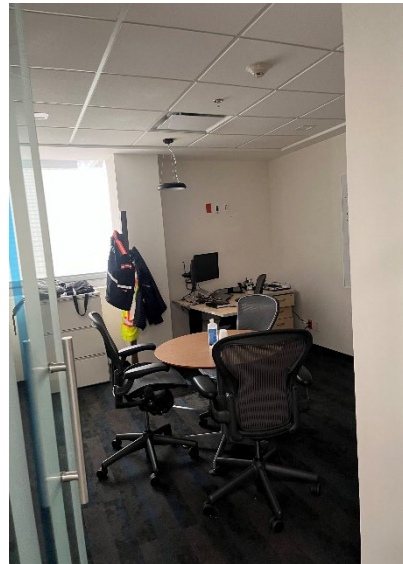
PLANTA BAJA 320 m²



OPCIÓN DE CONFIGURACIÓN



- 2 Privados
- 1 Sala de Juntas
- 1 Privado
- 42 Estaciones de Trabajo



TLALPAN 1779



CONTACTO

Amy Henderson

T. (55) 8526 8714
amy.henderson@cbre.com

Andrés Miranda

T. (55) 6818 1343
andres.miranda@cbre.com

© 2022 CBRE, Inc. All rights reserved. This information has been obtained from sources believed reliable, but has not been verified for accuracy or completeness. You should conduct a careful, independent investigation of the property and verify all information. Any reliance on this information is solely at your own risk. CBRE and the CBRE logo are service marks of CBRE, Inc. All other marks displayed on this document are the property of their respective owners, and the use of such logos does not imply any affiliation with or endorsement of CBRE. Photos herein are the property of their respective owners. Use of these images without the express written consent of the owner is prohibited.