

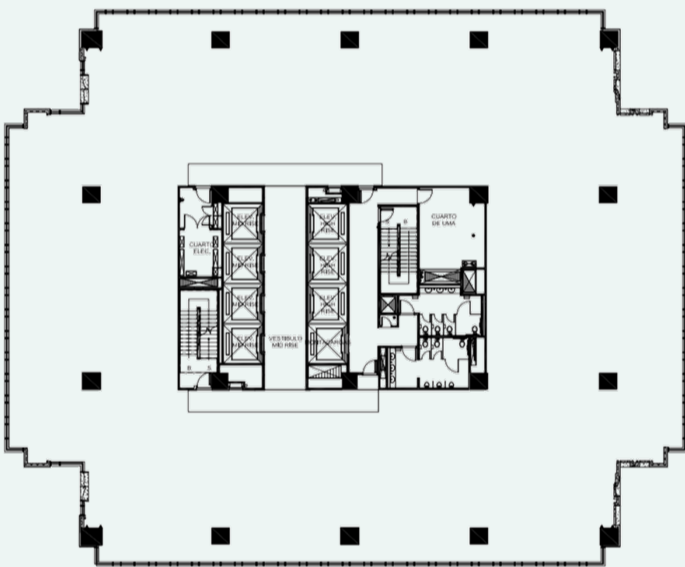
EN RENTA

# TORRE MAPFRE

5,250 M<sup>2</sup>  
RENTABLES



## PLANTA TIPO



### ESPACIOS DISPONIBLES

- Piso 7 413 m<sup>2</sup>
- Piso 9 365 m<sup>2</sup>
- Piso 10 226 m<sup>2</sup>
- Piso 12 3,161 m<sup>2</sup> + 650m<sup>2</sup> terraza exclusiva
- Piso 14 410 m<sup>2</sup>
- Piso 17 676 m<sup>2</sup>



**19 NIVELES**  
de oficinas



**Área Total**  
Rentable 38,000m<sup>2</sup>



**Estacionamiento**  
1@30m<sup>2</sup>



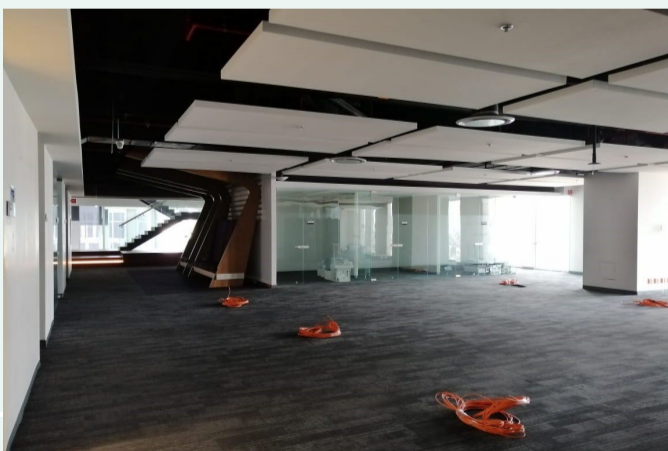
**Forma de Entrega**  
ESPACIOS  
ACONDICIONADOS



**Planta Tipo**  
1,535 m<sup>2</sup>



**Espacios a partir**  
De 230 m<sup>2</sup> en adelante



## CONTACTO

**ALEJANDRA SANTA CRUZ**

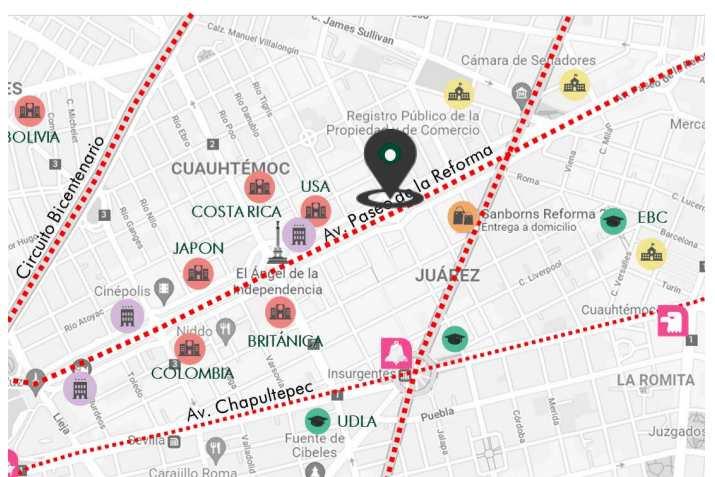
T. (55) 8526 8828 | alejandra.santacruz@cbre.com

**AURELIO RUBIO**

T. (55) 8526 8715 | aurelio.rubio@cbre.com

## UBICACIÓN

Av. Paseo de la Reforma #243, Colonia Cuauhtémoc, Alcaldía Cuauhtémoc, CDMX.



# CBRE

© 2022 CBRE, Inc. All rights reserved. This information has been obtained from sources believed reliable, but has not been verified for accuracy or completeness. You should conduct a careful, independent investigation of the property and verify all information. Any reliance on this information is solely at your own risk.